

1957



1967



1977



1987



1997



2007

annual report 06

Celebrating 50 Years of Students Conserving America



A Legacy. A Vision.

Nurturing Yellowstone’s comeback from inferno. Rescuing an ailing Everglades ecosystem. Propagating California condors, leatherback sea turtles, and Sonoma spineflowers.

SCA’s first 50 years of conservation include myriad achievements. Actions that have changed America’s landscape by keeping it as nature intended. Yet even as SCA commemorates its first 50 years, its focus is squarely on the next fifty.

Our natural world and our nation’s society face many of the same issues today as when SCA started in 1957. The difference is these issues have grown in size...and consequence.

Climate change. Wilderness policies. Park maintenance backlogs. Stressed resources. Urbanization. Nature-deficit disorder.

And while these challenges are very real, so is the hope that they can be resolved. For if SCA has proven anything over the past half-century, it is that the actions of one can profoundly improve the lives of many and—together—we can change the world.

When, as a recent college graduate, Elizabeth C. Titus Putnam set out to enact her senior thesis of a “Student Conservation Corps” she not only founded an organization – she helped launch a movement of stewardship and service. Her visionary idea has not only bolstered our environment, it has fortified our very culture.

Nearly 50,000 SCA volunteers have served in our parks, seashores, communities and classrooms in the last five decades. Initially, they made critical contributions in wildlife management, historic preservation and environmental education. Then, having recognized the power they have to shape our future, they chose to remain active in conservation as forest rangers, natural resources attorneys and local watershed councilors.

It is this passion for nature, this ethic of other-centeredness, that has fueled SCA since it began. And this energy source is not only renewable but infectious, ensuring that each day dawns brighter than the one before.

SCA 2006
3,091 volunteers
511 sites served
975 resource management partners
1.5 million hours served



SCA extends its enduring appreciation to sunsetting board members Sylvia Earle, Jesse Fink and Nick Lamont, for their leadership, vision and service.



A letter from the chairman

One morning last June, I walked to the window, pulled back the curtain and looked to the sky. Every member of the SCA Board of Directors would do the exact same thing.

We were in Bar Harbor, Maine. Our business meeting concluded, we were scheduled to join an SCA high school crew for a revegetation project in Acadia National Park. But the predicted rains had arrived and showed no sign of abating.

So we donned foul weather gear and shuttled via propane-powered bus to our work site, where the volunteers' boundless passion immediately offset any rain-dampened enthusiasm. The students shared with us their newly learned work skills and deeply rooted love of the outdoors, and together we planted more than 500 red spruce, mountain ash, fir, honeysuckle and other native plants. Our muddy brigade certainly proved the old adage that "many hands make light work."

It was a pleasure to serve with those dedicated volunteers, as they are emblematic of the 3,100 other young men and women who served with SCA last year and because they exemplify all for which SCA stands. And it is an honor to serve this organization, especially at this milestone in its history.

As SCA observes its 50th year, it is the nation's most relied-upon volunteer conservation force. In 2006, SCA helped protect more than 500 na-

tional parks and forests, launched or expanded community conservation programs in Milwaukee, Pittsburgh, Houston and other leading cities, and earned the Department of the Interior's prestigious Take Pride in America Award. And we did all this while recording our 19th consecutive annual operating surplus.

Credit for this must be shared among my dedicated colleagues on the Board, SCA's extraordinary staff led by President Dale Penny, our dedicated members, and generous patrons like you.

Today, no organization is better poised to help advance the conservation goals of our federal agencies, state land managers and local neighborhoods than SCA. I invite you to join us for what promises to be a remarkable year of achievement, outreach and environmental stewardship.

As one of the Acadia volunteers said to me last June, "This is the only planet we have. Can you think of anything more important to do?" Thank you for all that you do to support the critical work of SCA.

Fred Prescott, Chairman



A letter from the president

History is made by those who see the future. Who see beyond challenges and focus on solutions. Who create what could be out of what is.

SCA founder Elizabeth C. Titus Putnam made history 50 years ago when she recognized student volunteers as the answer to a strained national park system. Since then, nearly 50,000 young people have followed Liz's example and made their own piece of history. And cumulatively, they have made our natural world a far better place.

Over the past five decades, SCA has become the first choice responder for resource managers needing capable assistance on urgent conservation matters. Even as we publish this annual report, SCA is working with Mount Rainier officials to develop a backcountry recovery plan in which SCA will lead the efforts of thousands of volunteers after late 2006 floods washed away roads, trails, and campgrounds.

As is customary in a document such as this, we will report to you on the year past. And as we commemorate our milestone anniversary, we will revisit people and accomplishments from SCA's first half-century. But this is an organization that is moving boldly forward.

To continue to serve an ever-evolving environment, SCA is harnessing new field technologies, providing advanced training, and further expanding our outreach from parks and forests to neighborhoods and classrooms. We are engaging more people, addressing more issues, and achieving more mission. And that is the ultimate measurement for any organization.

I am grateful for the support of SCA's dedicated directors, particularly past-chairman Bill Coleman and his successor, Fred Prescott. I also appreciate our many agency partners and generous sponsors. I am awed on a daily basis by our exceptional staff, and again salute Liz Putnam for getting this whole thing started and providing continued inspiration to us all.

We dedicate our 50th year to the young men and women who serve through SCA. Only time will tell if they make history. But there is no doubt they are forging our future.

Dale M. Penny, President



As the Student Conservation Association commemorates its 50th anniversary, we do so with a new organizational logo. And we continue to pursue the mission of building new generations of conservation leaders and inspiring life-long stewardship of our environment and communities by engaging young people in hands-on service to the land.



A letter from the founder

As I reflect on SCA's past 50 years, it hardly seems possible that so much time has gone by since, as a 20-year-old student at Vassar College in 1953, I read an article in *Harper's* magazine by Bernard DeVoto, entitled "Let's Close the National Parks."

DeVoto described a crisis in our national parks caused by insufficient funding and increased post-War visitation. He proposed closing the parks until we, as a nation, accepted the responsibility for protecting them. It was in response to this article that my idea for a "Student Conservation Corps" was born; I felt that young people would be interested in volunteering to help our beleaguered national parks rather than see them closed or destroyed.

With essential teamwork and support from my colleague Martha Hayne Talbot as well as family, friends and other allies, my college thesis came to life in 1957 when 53 volunteers reported to Grand Teton and Olympic National Parks. Over the last half-century, it has been wonderful to witness how building coalitions and developing partnerships can be a recipe for success, as demonstrated by SCA's role as the nation's largest provider of conservation service opportunities for young people.

Last summer, I visited a trail crew in Washington's North Cascades. They worked long, hard days to protect the fragile landscape so that others might appreciate its beauty. And they "relaxed" on their off-day by climbing 6,000'

Desolation Peak. "I felt such a sensation of accomplishment!" exclaimed 16-year-old Kunhao Mei of Seattle. "Now I feel I can do anything!"

That comment reflects both the spirit of today's young people and their reality. They can accomplish anything, and SCA exists to provide them with opportunities to connect with each other and our natural world, and to be part of the solution for a healthy environment.

I take this opportunity to thank everyone involved in SCA's success and urge all of us to continue to work together. For our planet. For our children. For our future.

Elizabeth C. Titus Putnam

Elizabeth C. Titus Putnam, Founding President

"Today's young people... can accomplish anything."





Marisa Rodero is trailing a bear through the wilds of Grand Teton National Park. The creature has a head start of several days but that's just the way she wants it. Marisa, an SCA wildlife intern, is studying the impact of a growing grizzly population on the park's resident black bears. Once a week, she and a team of park biologists track a randomly selected, GPS-collared black bear for telltale signs of activity.

In Their Footsteps

"Grazing, log rips, day beds, scat," Marisa recites. "These are all indicators of bear behavior from which we can determine their health."

Grand Teton is one of two SCA "birthplace" parks dating back to SCA's first volunteers in 1957. It is also a popular recreation destination and Marisa is concerned that as the black bears are forced to redefine their territory, their interactions with humans will increase. Ironically, her research was enhanced by her own encounter.

"I saw the bear just a split second before she saw me," Marisa recalls. "My first reaction was 'Oh, no, I surprised her' but she seemed entirely indifferent. She continued about her

business and I got to watch her rip into a log, which was amazing because that's the kind of sign that I look for in my work.

"That single moment connected my science with my subject."

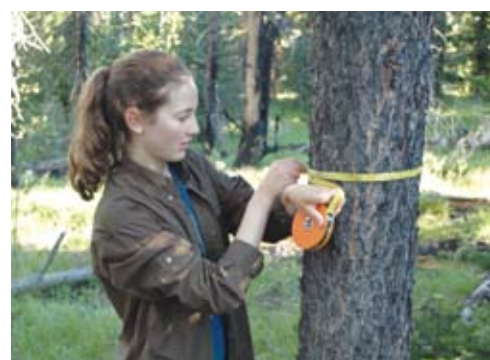
From the branch of a cottonwood, Marisa retrieves a loose clump of coarse, dark hair. "Hands-on learning is so valuable," she says, bagging the sample. "You don't need to worry about memorizing facts from a book because the experience itself is something you never forget."

She then marches after the bear, all the while following in the footsteps of so many SCA predecessors.



sca spotlight:
MARTHA
HAYNE TALBOT

More than 50 years ago, a Vassar instructor suggested to Martha "Marty" Hayne that she connect with another student, Elizabeth Cushman, who was seeking to launch the "Student Conservation Corps" she'd proposed in her senior thesis. They immediately formed a formidable partnership. "I have watched SCA influence the lives of so many," says Marty, seen above with husband ecologist Lee Talbot. "It has been like a pebble in a pond, creating expanding circles of influence." And Marty has been like a rock for SCA.





sca spotlight:
JOHN R. TWISS, JR

It is fitting that John Twiss has a peak in Antarctica named after him for he is a mountain of a man. SCA's Chairman Emeritus and a former director of the Marine Mammal Commission, John's extraordinary vision and resolute leadership enabled SCA to regularly bound over challenges and capitalize on opportunities throughout the 1980s and 90s. "John set new standards of excellence that continue to influence SCA today," says President Dale Penny. "His legacy, while far from over, is already unparalleled."

Conservation Starts Here

With thousands of SCA alumni working in the conservation field, visiting a national park or wildlife refuge can be like attending an SCA reunion. One such example is Carlsbad Caverns, where more than half the uniformed staff is made up of former SCA volunteers. They're not getting in on the ground floor – they're starting below the surface.

"SCA got me into caving," declares interpretive ranger Loren Reinhold, whose spelunking career also includes stints in the Ozark Mountains, Oregon Caves, and Great Basin National Park. "Without my SCA experience, I wouldn't be here."

Earning a job with the park service is an exceptionally competitive endeavor. But SCA, whose mission it is to build new generations of conservation leaders, provides aspiring candidates with the experience and networks they need to succeed.

"In all the different parks I've worked at, there are either SCA volunteers or former SCAs working at every one of them," states Carlsbad ranger and SCA alum Matt Slater (at right, center). Last year, he says, 15 SCA members served at the Caverns and all exceeded expectations.

"Our best interpreters are SCAs," adds Rob Lorenz, another Carlsbad SCA alumnus (at right, lower left). "They have so much energy and creativity. Seeing their enthusiasm, it definitely boosts the morale around among staff here."

"SCA is great for the parks," agrees Renee West, Carlsbad's supervisory biologist, another who got her start through SCA when she filled a resource management internship at Grand Canyon. "I got to learn a broad range of park operations and gained the experience I needed to begin my career."

Keeping his voice to a whisper in the Hall of the White Giant, Ranger Reinhold says a favorite pastime is donning one of his old SCA tee shirts and walking through a national park. "You see SCA alumni all over the park service. Someone sees my shirt and it sparks conversation," he explains. "SCA has opened so many doors for me."





For most of its 50 years, SCA has been known for working in the wilderness. Today, however, you're as likely to see an SCA volunteer delivering a green business plan across a conference table or performing a home energy audit as installing a water bar at 8,000 feet.

Doing More by Reaching More

Making large-scale changes to unsustainable behaviors is the best way to address far-reaching issues such as climate change and water shortages. That's why SCA is bringing the practice of stewardship to cities, corporations and schools across the country. By promoting recycling and limiting consumption, SCA is literally bringing conservation home.

Across New York's Hudson River Valley – home to more than three million people – SCA members last year conducted habitat restoration and invasive species removal projects to salve some of the region's most critical ecological threats. SCA is a founding partner in the new Chicago Conservation Corps, dedicated to improving the city's environment by developing "green" neighborhood leadership. In West Virginia, Governor Joseph Manchin hailed SCA's campaign to help citizens save energy and water and cut waste as

a "superior outreach program" that is "making an invaluable contribution through community involvement."

From Pittsburgh to Seattle to San Francisco Bay, SCA introduced thousands of high school students to green spaces in their own urban neighborhoods. Participants planted native gardens, rehabbed local parks, and forged a connection with the outdoors where one might least expect it. "I've enjoyed trails before," says Angelina Gonzalez, 15, of Houston, "but now I'm a part of making them."

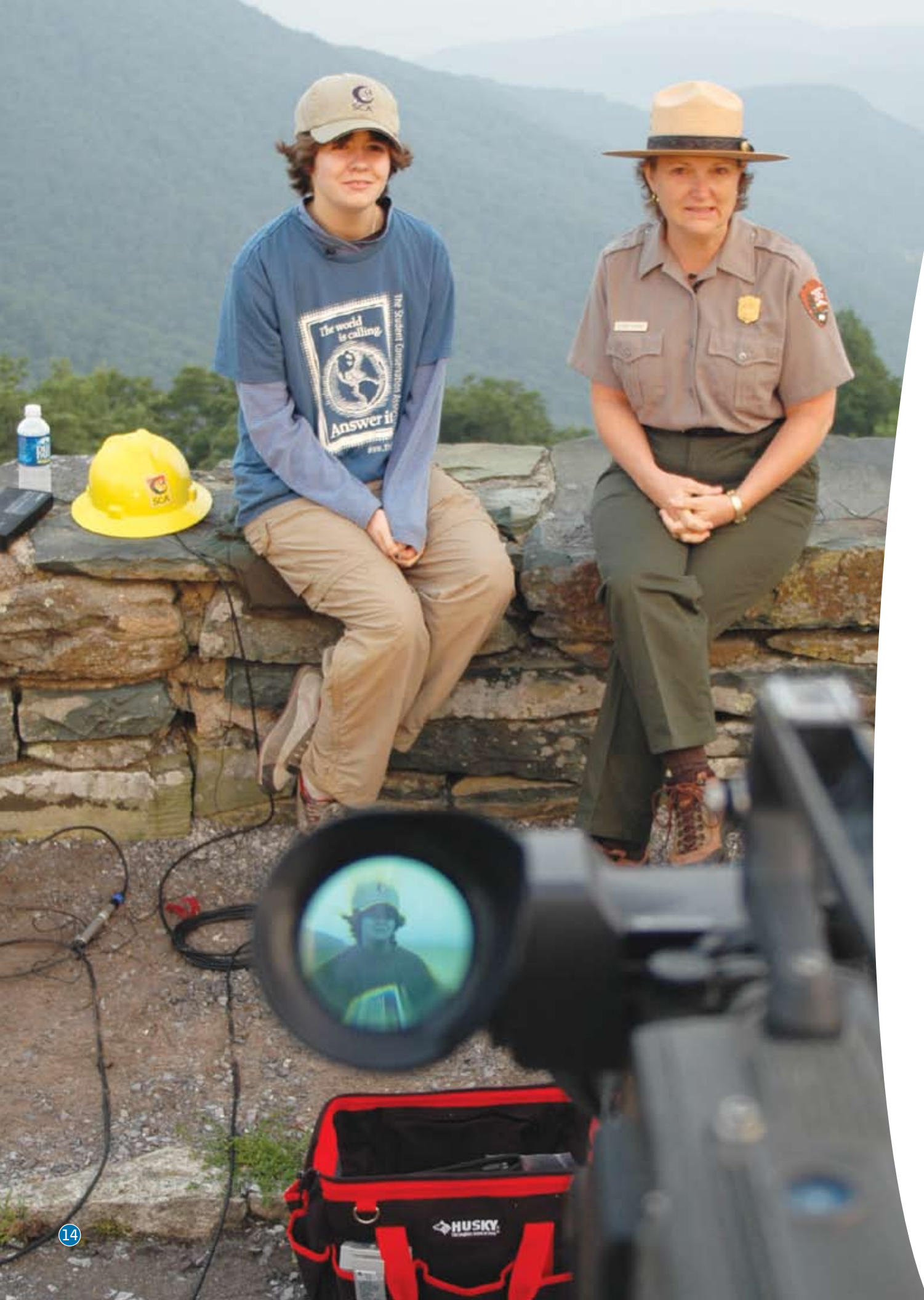
City youth not only discover a better way of life but a way to fulfill their dreams. Sixteen-year-old Joseph Kelly of Washington, DC has already served two stints with SCA. "It gets me closer to my goal," he says, "of being an environmental lawyer with the EPA."



sca spotlight: JACK CHIN

The child of immigrant parents, Jack grew up in a Chinese laundry in New York City and credits his 1979 SCA experience at Acadia National Park with "providing my first real encounter with the natural world and crystallizing my interest in an environmental career." A Senior Analyst and Vice President with philanthropic consultants Blueprint Research & Design of San Francisco, Jack (pictured with sons Neil and Nevin) later returned to SCA to serve on its board and help shape SCA's community-based strategies for cultivating outdoor leadership among diverse youth.





50 Years Running

If one thing differentiates SCA from other conservation organizations it is that SCA is constantly in action – engaging, energizing and elevating – and this will never be more true than in our 50th year.

SCA's golden anniversary is a similarly gleaming opportunity to spur both awareness and achievement. SCA is partnering with American Eagle Outfitters, the presenting sponsor of our 50th anniversary campaign, and with many other top corporate citizens including Hill & Knowlton, as well as the National Park Service to enlist millions in the protection of our natural and cultural resources.

To honor the woman who launched SCA from her senior thesis, we will seek modern perspectives and proposed solutions from today's students in a national multi-media essay competition.

We will strengthen our network of nearly 50,000 alumni by bringing them back together for conservation service projects in parks and town squares across the country and promoting their ongoing commitment to nature as an example for us all.



In April of 2008, SCA will convene *EarthVision*, a first-of-its-kind youth conservation summit designed to identify and advance actions for a healthier planet. The four-day event in Washington, DC will link environmental professionals, scientists, elected officials, corporate leaders, writers, and others with hundreds of graduate, college and high school students to explore new remedies for our most urgent conservation challenges.

More than a final punctuation to our first 50 years, SCA's anniversary is a platform from which to launch our next 50 years. A chance to chart a superior course for our public lands. And a time to "Celebrate 50 Years of Students Conserving America."

50th Anniversary events

- **Conservation in Action Contest** – students compete for scholarships by proposing actionable conservation ideas via essays, videos and other media
- **Alumni reunions** in parks and cities across the U.S.
- **"Green Tie" Affairs** in San Francisco, Seattle, Pittsburgh, and Washington, DC
- **EarthVision: Actions for a Healthy Planet** – a landmark summit between today's environmental professionals and the conservation leaders of tomorrow in Washington, DC, April 2008

For more information, visit www.theSCA.org

AMERICAN EAGLE OUTFITTERS
Presenting Sponsor

sca spotlight: STEVE SARLES

With the exception of some early seasonal stints (ask him about riding the New York subway in full ranger uniform to his post at the Statue of Liberty), Steve's career has been defined by his work at Yellowstone National Park, where he has served since 1982 and forged a national reputation for excellence in guiding SCA and Youth Conservation Corps programs. He says it all started when "as a college student from outside Washington, DC, I spent the summer of '78 at Grand Canyon as an SCA intern. One day I hiked all the way down the canyon to board a raft for river patrol. Does it get any better than that?!"



SCA is proud to work with leading public and private land management agencies and other organizations. We value their partnership and encourage you to look for SCA volunteers at these and other sites.

SCA's Land Management Partners

Alabama

Alabama 4-H Center and Environmental Field School
Bankhead National Forest
Bon Secour National Wildlife Refuge
Cumberland Piedmont Network
Fort Morgan State Historic Site
Horseshoe Bend National Military Park
Little River Canyon National Preserve
Natchez Trace Parkway
Tuskegee Institute National Historic Site

Alaska

Alaska Maritime National Wildlife Refuge
Alaska State Office – Bureau of Land Management
Alaska Wildlife Alliance
Arctic National Wildlife Refuge
Bering Land Bridge National Preserve
Denali National Park & Preserve
Fairbanks District Office – Bureau of Land Management
Gates of the Arctic National Park & Preserve
Glacier Bay National Park & Preserve
Glenallen District – Bureau of Land Management
Katmai National Park & Preserve
Kenai Fish and Wildlife Field Office
Kenai Fishery Resource Office
Kenai Fjords National Park
Kenai National Wildlife Refuge
King Salmon Fishery Resource Office
Klondike Gold Rush National Historical Park
Kodiak National Wildlife Refuge
Lake Clark National Park and Preserve
Matanuska-Susitna Borough Parks and Recreation Department
Murie Science and Learning Center
Northern Field Office – Bureau of Land Management
Northern Southeast Regional Aquaculture Association
Tongass National Forest
Western Arctic National Parklands
White Mountain National Recreation Area
Wrangell-St. Elias National Park & Preserve
Yukon-Charley Rivers National Preserve

Arizona

Apache-Sitgreaves National Forest
Arizona Game & Fish Department
Arizona State University – Polytechnic Campus
Arizona Strip – Bureau of Land Management
Bill Williams River National Wildlife Refuge
Buenos Aires National Wildlife Refuge
Cabeza Prieta National Wildlife Refuge
Canyon De Chelly National Monument
Chiricahua National Monument
Cibola National Wildlife Refuge
Coronado National Memorial
Flagstaff Area National Monument
Glen Canyon National Recreation Area
Grand Canyon National Park
Havas National Wildlife Refuge
Hubbell Trading Post National Historic Site
Imperial National Wildlife Refuge
Lake Mead National Recreation Area
Montezuma Castle & Tuzigoot National Monuments
Navajo National Monument
Organ Pipe Cactus National Monument
Petrified Forest National Park
Saguaro National Park
San Carlos Apache Tribe
Sonoran Desert National Monument
Sunset Crater National Monument
Tonto National Forest
Tonto National Monument
Tucson Field Office – Bureau of Land Management
White Mountain Apache Reservation
Wildland Fires Lessons Learned Center
Willow Beach National Fish Hatchery
Yuma Field Office

Arkansas

Arkansas 4-H Center
Buffalo National River
Chugach State Park
Ouachita National Forest
Pea Ridge National Military Park

California

Alturas Field Office – Bureau of Land Management
Ancient Bristlecone Pine Forest
Andrew Molera State Park
Angel Island State Park

Angeles National Forest
Arastradero Preserve
Arcata Field Office
Argus Range Wilderness Area
Bakersfield Field Office – Bureau of Land Management
Barstow Field Office – Bureau of Land Management
Beale Air Force Base
Big Maria Mountains Wilderness Area
Big Morongo Area of Critical Environmental Concern
Bigelow Cholla Garden Wilderness Area
Bighorn Mountain Wilderness Area
Black Mountain Wilderness Area
Bodie State Historic Park
Bristol Mountains Wilderness Area
Cache Creek
California Department of Parks & Recreation
California Desert District – Bureau of Land Management
California Off-Highway Motor Vehicle Recreation Commission
California State Parks
Camp Ramah
Carrizo Gorge Wilderness Area
Carrizo Plain National Monument
Catalina Island Conservancy
Cedarville Office – Bureau of Land Management
Channel Island Field Station
Channel Islands National Park
Chemehuevi Mountains Wilderness Area
Chuckwalla Mountains Wilderness Area
Cibola National Wildlife Refuge
City of Barstow
Clear Creek Management Area – Bureau of Land Management
Cleghorn Lakes Wilderness Area
Cleveland National Forest
Clipper Mountains Wilderness Area
Coachella Valley Preserve
Coyote Mountains Wilderness Area
Dead Mountains Wilderness Area
Death Valley National Park
Devils Postpile National Monument
Don Edwards San Francisco Bay National Wildlife Refuge
East Bay Regional Park District
El Centro Field Office – Bureau of Land Management

Fish Creek Mountains Wilderness Area
Forever Young Treehouses
Fort Ord Public Lands – Bureau of Land Management
Friends of Sausal Creek
Funeral Mountains Wilderness Area
Giant Sequoia National Monument
Golden Gate National Recreation Area
Golden Valley Wilderness Area
Grass Valley Wilderness Area
Historical American Building Survey
Hollister District – Bureau of Land Management
Hollow Hills Wilderness Area
Ibex Wilderness Area
Imperial National Wildlife Refuge
Indian Pass Wilderness Area
Institute for Wildlife Studies
Inyo Mountains Wilderness Area
Inyo National Forest
Jacumba Wilderness Area
Jawbone-Butterbredt Area of Critical Environmental Concern
Jedediah Smith State Park
Joshua Tree National Park
Juniper Flats Area of Critical Environmental Concern
Kelso Dunes Wilderness Area
Kernville Valley
Kiavah Wilderness Area
King Range Conservation Area
Kings River Experimental Watershed
Kingston Range Wilderness Area
Klamath National Forest
Lacks Creek Conservation Area
Lassen National Forest
Lassen Volcanic National Park
Lava Beds National Monument
Little Chuckwalla Mountains Wilderness Area
Little Picacho Wilderness Area
Manzanar National Historic Site
McArthur-Burney Falls State Park
Meccacopia Special Recreation Management Area
Mendocino National Forest
Mesa Verde National Park
Mesquite Wilderness Area
Mojave National Preserve
Mount Diablo State Park
National Civilian Community Corps
National Forest Recreation Association
Naval Air Station North Island
Naval Air Weapons Station, China Lake
Needles Field Office – Bureau of Land Management
Newberry Mountains Wilderness Area
Nopah Range Wilderness Area
North Mesquite Mountains Wilderness Area
Old Woman Mountains Wilderness Area
Pacific Crest Trails Association
Pacific Southwest Research Station
Pahrump Valley Wilderness Area

Palen/McCoy Wilderness Area
Palm Springs South Coast Field Office – Bureau of Land Management
Palo Verde Mountains Wilderness Area
Pfeiffer Big Sur State Park
Pinnacles National Monument
Piper Mountains Wilderness Area
Piute Mountains Wilderness Area
Plumas National Forest
Point Reyes National Seashore
Rancho Arroyo Seco
Redwood National Park
Resting Springs Range Wilderness Area
Rice Valley Wilderness Area
Ridgecrest Field Office – Bureau of Land Management
Riverside Mountains Wilderness Area
Riverside Office – Bureau of Land Management
Rodman Mountains Wilderness Area
Rosie the Riveter WWII Home Front National Historical Park
Sacatar Trail Wilderness Area
Saddle Peak Hills Wilderness Area
San Bernardino National Forest
San Francisco Bay Model – Army Corps of Engineers
San Francisco Maritime National Historic Park
San Geronimo Wilderness Area
San Jacinto National Monument
San Pablo Bay National Wildlife Refuge
Santa Catalina Island
Santa Margarita Ecological Preserve
Sawtooth Mountains Wilderness Area
Sequoia & Kings Canyon National Parks
Sequoia National Forest
Sequoia Natural History Association
Shasta-Trinity National Forest
Sheephole Valley Wilderness Area
Sierra National Forest
Slide Ranch Environmental Center
Sonny Bono Salton Sea National Wildlife Refuge
South Nopah Range Wilderness Area
Stanislaus National Forest
Stepladder Mountains Wilderness Area
Stone Lakes National Wildlife Refuge
Sugarloaf Ridge State Park
Summer Search Napa-Sonoma
Summer Search Silicon Valley
Susanville Railroad Depot
Sylvania Mountains Wilderness Area
Tahoe National Forest
Trilobite Wilderness Area
Trinity Alps Wilderness
Trust for Public Lands
Tule River Ranger District
Turtle Mountains Wilderness Area
USDA Research Branch
Vandenberg Air Force Base
Vasquez Rocks County Park



sca spotlight: GARDEN CLUB OF AMERICA

SCA and the Garden Club of America have been enthusiastic allies for the past half-century. Vermont's Bennington Garden Club signed on as a sponsor in 1956 when SCA was just a concept. But that endorsement helped SCA take root and eventually blossomed into financial support from over 180 garden clubs, resulting in conservation opportunities for thousands of young people across the U.S..

Warner Mountain Ranger District
Western Ecological Research Center
West Mesa Area of Critical Environmental Concern
Westminster Woods Camp & Conference Center
Whiskeytown National Recreation Area
Wildlands Conservancy
Wildlife Center for Disease & Toxin Investigation
Yosemite National Park
Yuha Desert – Bureau of Land Management

Colorado

Arapaho & Roosevelt National Forest
Black Canyon of the Gunnison National Monument
Bent's Old Fort National Historic Site
Colorado State Office - Bureau of Land Management
Curecanti National Recreation Area
Denver Contracting Office – National Park Service
Dinosaur National Monument
Dolores Field Office – Bureau of Land Management
Florissant Fossil Beds National Monument



sca spotlight: GEORGE BREWER

Among SCA's most influential early champions was George E. Brewer, Jr., then vice president of The Conservation Foundation. In the mid-1950s, he encouraged young Liz Cushman (Putnam) to take her idea and "go visit the parks," counseled and mentored her, and turned his office into a virtual SCA incubator. Since then, generations of Brewers have served SCA in one capacity or another, including George's granddaughter, Fraser Brewer Gilbane, an SCA alumna, board member, and chairwoman of the SCA board's 50th Anniversary committee. Quite a legacy.

- Great Sand Dunes National Park and Preserve
- Hovenweep National Monument
- Intermountain Region – National Park Service
- Mesa Verde National Park
- Montrose District – Bureau of Land Management
- National Association of Interpretation
- Natural Resource Program Center – National Park Service
- Rocky Mountain National Park
- Sand Creek Massacre National Historic Site
- San Juan National Forest
- San Juan – Rio Grande National Forest
- Southern Ute Agency
- Stratton Sagebrush Ecology Site
- The Nature Conservancy – Colorado Chapter
- United States Geological Survey – Great Sand Dunes
- White River National Forest

Connecticut

- Elm City Parks Conservancy
- Naugatuck River Basin
- Solar Youth, Inc.
- Soundwaters Center
- Weir Farm National Historic Site

Delaware

- Partnership for the Delaware Estuary Fund

District of Columbia

- Anacostia Park
- C&O Canal National Historical Park
- Center for Cultural Resources – National Park Service
- DC Children and Youth Investment Trust
- DC Department of Health, Environmental Health Administration, Watershed Protection Division
- DC Public Charter Schools
- DC Public Schools
- Diversity and Special Projects – National Park Service
- Fund for American Studies
- George Washington Memorial Parkway
- Green Team Project
- Heritage Preservation Services – National Park Service
- Historical American Building Survey
- Historical Preservation Office – National Park Service
- Kenilworth
- Native American Cultural Heritage Preservation Program
- National Capital Parks – East
- National Park Foundation
- National Parks and Conservation Association
- NOAA – Chesapeake Bay Program
- Rivers, Trails & Conservation Assistance Program-National Park Service
- Rock Creek Park
- The Nature Conservancy – Maryland/District of Columbia Chapter
- Trust for Public Land
- United States House of Representatives Office of Sherwood Boehlert
- United States House of Representatives Office of Henry Brown
- United States House of Representatives Office of Jim Costa
- United States House of Representatives Office of Ron Kind
- United States House of Representatives Office of Steve Rothman
- United States House of Representatives Office of Christopher Shays
- Urban Tree House
- Youth Programs Division – National Park Service

Florida

- Agricultural Research Service – Invasive Plant Research Laboratory
- Apalachicola Bluffs and Ravines Preserve
- Archbold Biological Station
- Avon Park Air Force Range
- Big Cypress National Preserve
- Biscayne National Park
- Business Management Group – National Park Service
- Calusa Nature Center & Planetarium
- Canaveral National Seashore
- Dry Tortugas National Park
- Eglin Air Force Base
- Everglades National Park
- Florida Fish and Wildlife Commission
- Florida National Scenic Trail
- Florida Panther National Wildlife Refuge
- Florida Trail Association, Inc.
- Fort Pickens State Park
- Gulf Islands National Seashore
- Jonathan Dickinson State Park
- Ocala National Forest
- Panama City Ecological Services Field Office
- Pensacola Naval Air Station
- Preservation Jacksonville
- South Florida Caribbean Network
- The Nature Conservancy – Disney Wilderness Preserve
- The Nature Conservancy – Eastern Traveling Team
- The Nature Conservancy – Florida Chapter
- The Nature Conservancy – Tiger Creek Preserve
- Timucuan National Ecological Preserve
- Whiting Field Naval Air Station

Georgia

- Andersonville and Jimmy Carter National Historic Sites
- Chattahoochee River National Recreation Area
- Cumberland Island National Seashore
- Fort Frederica National Monument
- Fort Pulaski National Monument
- Hickory Hill
- Honda Environmental Center
- Kennesaw Mountain National Battlefield Park
- Moody Forest Natural Area
- Ocmulgee National Monument
- Southeast Regional Office – National Park Service
- Spirit Creek Educational Forest
- The Nature Conservancy – Georgia Chapter
- University of Georgia Marine Extension Service
- Warm Springs Fish Technology Center
- Warm Springs National Fish Hatchery
- Warm Springs Regional Fisheries Center

Hawaii

- Hakalau Forest National Wildlife Refuge
- Haleakala National Park
- Hawaii Volcanoes National Park
- Kauai Forest Bird Recovery Project
- Kilauea Field Station

Idaho

- Boise National Forest
- Coeur D'Alene District – Bureau of Land Management
- Coeur D'Alene Tribe
- Craters of the Moon National Monument
- Dworshak Reservoir
- Frank Church River of No Return Wilderness
- Lucky Peak Dam and Lake – Army Corps of Engineers
- National Interagency Fire Center – Bureau of Indian Affairs
- National Interagency Fire Center – National Park Service
- Nez Perce Indian Reservation
- Nez Perce National Forest
- Payette National Forest
- Pocatello Field Office – Bureau of Land Management
- Salmon-Challis National Forest
- Sawtooth National Forest
- Twin Falls District – Bureau of Land Management
- Yellowstone National Park

Illinois

- City of Chicago Department of Environmental Protection
- Forever Young Treehouses – Barrington Parks Project
- Lake Shelbyville – Army Corps of Engineers

Indiana

- Big Oaks National Wildlife Refuge
- Door County
- Gary Sanitary District
- Great Lakes Science Center
- Hardy Lake State Recreation Area
- Indiana Dunes National Lakeshore
- Lincoln Boyhood National Memorial

Iowa

- Coralville Lake – Army Corps of Engineers
- Desoto National Wildlife Refuge
- Herbert Hoover National Historic Site
- Neal Smith National Wildlife Refuge
- Port Louisa National Wildlife Refuge

Kansas

- Fort Scott National Historic Site
- Horton Agency
- Marais Des Cygnes National Wildlife Refuge

Kentucky

- Buckhorn Lake – Army Corps of Engineers
- Cumberland Gap National Historic Site
- Daniel Boone National Forest
- Mammoth Cave National Park

Louisiana

- National Center for Preservation Technology and Training
- New Orleans Jazz National Historic Park
- Southeast Louisiana Refuges

Maine

- Acadia National Park
- Appalachian Trail
- Baxter State Park
- Boothbay Region Land Trust
- Ferry Beach Ecology School
- Maine Appalachian Trail Club
- Maine Land Trust
- National Park Service – Northeast Regional Office
- Tanglewood 4-H Camp and Learning Center

Maryland

- Antietam National Battlefield
- Assateague Island National Seashore
- Association of Partners for Public Lands
- C&O Canal National Historical Park
- Catoctin Mountain National Park
- Environmental Concern, Inc.
- Greenbelt Park
- Hard Bargain Farm
- Monocacy National Battlefield Park
- National Capital Parks East – Fort Washington
- Patuxent River Naval Air Station
- Patuxent Research Refuge
- Rock Creek Park
- The Nature Conservancy – Maryland/District of Columbia Chapter

Massachusetts

- ACE Westville Lake
- AJ Skinner State Park
- AMC Berkshire Chapter
- AMC Camp Noble View
- Ames Nowell State Park
- Appalachian Trail
- Bartholomew's Cobble – Trustees of Reservations
- Berkshire Natural Resources Council
- Blue Hills Reservation
- Boston Harbor Islands National Recreation Area
- Breakheart Reservation
- Cape Cod National Seashore
- Chester-Blandford State Forest, Boulder Park
- Clarksburg State Park
- Connecticut River Coordinator's Office

SCA's Land Management Partners

- Corellus State Forest
- Demarest Lloyd State Park
- Dubuque Memorial State Forest
- Eastern Massachusetts National Wildlife Refuge
- East Brimfield Lake – Army Corps of Engineers
- FG Hills State Forest
- Frederick Law Olmsted National Historic Site
- Harold Parker State Forest
- Leominster State Forest
- Longfellow National Historic Park
- Lowell National Historical Park
- Lynn Woods Reservation
- Manice Education Center
- Massachusetts Audubon Society
- Middlesex Fells Reservation
- Minute Man National Historic Park
- Mohawk State Forest
- Moore State Park
- Mount Everett State Reservation
- Mount Grace Conservation Land Trust
- Mount Greylock State Reservation
- Mount Tom State Reservation
- Mount Washington State Forest
- Mount Wachusett State Reservation
- Myles Standish State Forest
- Nantucket Conservation Commission
- Nantucket State Forest
- New England Forestry Foundation
- North Attleboro National Fish Hatchery
- Olmsted Center for Landscape Preservation
- Otter River State Forest
- Otter River State Park
- Quabbin Reservoir
- Red Gate Farm
- Roundhouse Center for Cultural Evolution
- Savoy Mountain State Forest
- Stony Brook Reservation
- The Hitchcock Center for the Environment
- The Nature Conservancy – Massachusetts Field Office
- The Nature Conservancy – Martha's Vineyard Landscape
- Wachusett Mountain State Reservation
- Wendell State Forest
- West Hill Dam and Charles River Natural Valley Storage Area
- Westfield River Wild and Scenic Advisory Commission
- Willard Brook State Forest

Michigan

- Hiawatha National Forest
- Isle Royale National Park
- Keweenaw National Historical Park
- North Country Scenic Trail Association
- Pictured Rocks National Lakeshore
- Shiawassee National Wildlife Refuge
- Sleeping Bear Dunes National Lakeshore
- The Nature Conservancy – Eastern Traveling Team

SCA's Land Management Partners

Minnesota

Camp Courage
Grand Portage National Monument
Prairie Wetlands Learning Center
Voyageurs National Park
Windom Wetland Management District

Mississippi

Crow's Neck Environmental Education and Conference Center
Gulf Islands National Seashore
Mississippi Sand Hill Crane National Wildlife Refuge
Natchez Trace Parkway
Yazoo National Wildlife Refuge

Missouri

George Washington Carver National Monument
Great River & Two Rivers National Wildlife Refuge
Mark Twain National Forest
Mark Twain National Wildlife Refuge
Mastodon State Historic Site
Onondaga Cave State Park
Ozark National Scenic Riverways
Wilson's Creek National Battlefield

Montana

Big Hole National Battlefield
Bighorn Canyon National Recreation Area
Charles M. Russell National Wildlife Refuge
Confederated Salish Kootenai Tribe
Flathead National Forest
Glacier National Park
Little Bighorn Battlefield National Monument
Medicine Lake National Wildlife Refuge
Yellowstone National Park

Nebraska

Agate Fossil Beds National Monument
Homestead National Monument of America
Lewis and Clark National Historic Trail
National Underground Railroad Network to Freedom
Scotts Bluff National Monument
Winnebago Agency

Nevada

Blacks Creek – Bureau of Land Management
Carson City District – Bureau of Land Management
Great Basin National Park
Humboldt-Toiyabe National Forest
Lake Mead National Recreation Area
Stillwater National Wildlife Refuge
University of Nevada, Reno - Biological Resources Research Center

New Hampshire

Ahern State Park
Allenstown Elementary School
Audubon Society of New Hampshire
Bear Brook State Park
Beaver Brook Falls Wayside
Beech Street Elementary School
Central New England Fishery Resources Office
City of Manchester
Coleman State Park
Curious George Cottage
Deer Mountain Campground
Dixville Notch State Park
Echo Lake State Park
Ellacoya State Park
Franconia Notch State Park
Geneva Point Center
Greenfield State Park
Hallsville Elementary School
Hampton Beach State Park
Hillside Middle School
Hopkinton – Everett Lakes
Jewett Elementary School
Lafayette Campground
Lake Francis State Park
Lake Massabesic – New Hampshire Audubon
Maple Mania Event – New Hampshire Audubon
Mount Sunapee State Park Campground
Nashua National Fish Hatchery
New Hampshire Farm Museum
New Hampshire Parks and Recreation Division
New Hampshire Department of Transportation
Odiorne State Park
Pawtuckaway State Park
Pillsbury State Park
Pisgah State Park
Randolph Mountain Club
Rhododendron State Park
Robert Frost Farm
Saint-Gaudens National Historic Site
Salvation Army Kids Café
Salvation Army of Manchester
Salvation Army Tutoring Center
Seacoast YMCA
Silk Farm – New Hampshire Audubon
Society for the Protection of New Hampshire Forests
Squam Lakes Association
The Fells/John Hay National Wildlife Refuge
Town of Allenstown
Umbagog State Park
University of New Hampshire Cooperative Extension 4-H
Wadleigh State Park
Wallis Sands State Beach
Webster Elementary School
Wentworth-Coolidge Mansion
White Mountain National Forest
Wilson Elementary School

Winslow State Park
Wonalancet Out Door Club

New Jersey

Delaware Water Gap National Recreation Area
Gateway National Recreation Area
Hunterdon County Department of Parks and Recreation
Morristown National Historical Park
New Jersey State Parks
Princeton University Ecological Research Project
Teetertown Ravine Nature Preserve

New Mexico

Bandelier National Monument
Bitter Lake National Wildlife Refuge
Bosque del Apache National Wildlife Refuge
Capulin Volcano National Monument
Carlsbad Caverns National Park
Carlsbad Field Office – Bureau of Land Management
Chaco Culture National Historical Park
Dexter National Fish Hatchery
El Malpais National Monument
El Morro National Monument
Gila Cliff Dwellings National Park
Lincoln National Forest
Mescalero Apache Agency – Bureau of Indian Affairs
Pecos National Historical Park
Rails to Trails Association
Rocky Mountain Research Station
Route 66 Corridor Preservation Program
San Andes National Wildlife Refuge
Santa Fe National Forest
Sevilleta National Wildlife Refuge
Taos Field Office – Bureau of Land Management
White Sands National Monument
Zuni Reservation – Bureau of Indian Affairs

New York

Adirondack Park
Appalachian Trail Project
Bear Mountain State Park
Bird Conservation Area Program
Blue Mountain Wild Forest
Blue Ridge Wilderness Area
Caroga Lake Campground
Central New York Conservancy
Chingachgook Outdoor Center
Clay Pit Ponds State Park Preserve
Cortland Field Office
Debar Mountain Wild Forest
Division of Coastal Resources
Division of Public Affairs and Education, Albany
Eight Lake Campground
Environmental Management Bureau
Finger Lakes National Forest
Fire Island National Seashore
Five Rivers Environmental Education Center
Gateway National Recreation Area
Gateway National Recreation Area – Jamaica Bay
Golden Beach Campground
Grafton Lakes State Park
Greene County Soil and Water Conservation District
Hale Creek Field Station
Hoffman Notch Wilderness Area
Hudson River Estuary Program
Hudsonia, Limited
Institute of Ecosystem Studies
James Baird State Park
Jessup River Wild Forest
Lake George Land Conservancy
Lake George Wild Forest
Lewey Lake Campground
Lila-Whitney Wilderness Area
Limekiln Lake Campground
Long Island Field Office
Mason Lake Campground
Minnewaska State Park Preserve
Moffit Beach Campground
Moose River Plains Recreation Area
Moreau Lake State Park
New York City Department of Environmental Protection – Stream Management Program
New York District – Army Corps of Engineers
New York State Department of Environmental Conservation
New York State Department of Health
New York State Department of State – Division of Coastal Resources
New York State Office of Parks, Recreation, Historic Preservation – Environmental Management Bureau
New York/New Jersey Trail Conference - Appalachian Trail, Bear Mountain State Park
New York/New Jersey Trail Conference - Appalachian Trail, Dutchess/Putnam
Nick's Lake Campground
Northampton Beach Campground
Northeast Regional Office – National Park Service
Peebles Island State Forest
Pigeon Lake Wilderness Area
Pixley Falls State Park
Point Comfort Campground
Poplar Point Campground
Riverkeeper
Rockland Lake State Park
Rockwood State Forest
Roosevelt-Vanderbilt National Historic Site
Santa Clara Fee Lands
Saranac Lakes Wild Forest
Saratoga Spa State Park
Scenic Hudson
Scenic Hudson Land Trust, Incorporated
Sergeant Ponds Wild Forest

Seventh Lake Campground
Sharpe Reservation
Sharpe Reservation/Fresh Air Fund
Siamese Ponds Wilderness Area
Staatsburgh State Historic Site
Statue of Liberty National Monument
Stone Barns Center for Food & Agriculture
Stony Kill Environmental Education Center
Stony Kill Farm Environmental Education Center
Taconic Outdoor Education Center
Taconic Outdoor Education Center
Thacher State Park
The Nature Conservancy – Albany Pine Bush Preserve
The Nature Conservancy – Catskill Mountain Initiative
The Nature Conservancy – Catskill Wilton Wildlife Preserve and Park
The Nature Conservancy – Long Island
Tioga Point Campground
Titusville State Forest
Vanderwhacker Mountain Wild Forest
West Canada Lakes Wilderness Area
Wilton Wildlife Park and Reserve
Women's Rights National Historic Park
YMCA Camp Chingachgook

North Carolina

Blue Ridge Parkway
Camp Lejeune Marine Corps Base
Cape Hatteras National Seashore
Cape Lookout National Seashore
Great Smoky Mountains National Park
Eastern Cherokee Reservation
Land Trust for the Little Tennessee Southeast Coast Monitoring Network
Moore's Creek National Battlefield
Pisgah National Forest
Southeast Exotic Plant Management Team– National Park Service
The Nature Conservancy – Eastern Traveling Team

North Dakota

Audubon National Wildlife Refuge
Fort Berthold Agency
Fort Union Trading Post Natural Historic Site
Knife River Indian Villages National Historic Site
Theodore Roosevelt National Park
Turtle Mountain Environmental Learning Center
Turtle Mountain Tribe

Ohio

Camp Muskingum
Camp Tuscazoar Foundation
Cuyahoga Valley National Recreation Area



sca spotlight: NINA ROBERTS

Currently an Assistant Professor at San Francisco State University, Nina taught SCA many valuable lessons on measuring conservation program outcomes in the 1990s. Her work not only enhanced SCA's ability to deliver positive participant experiences, but helped the organization articulate its value to a wide range of prospective partners, seeding program growth. Nina also guided SCA's urban conservation programs for young people of color.

Forever Young Treehouses – Laurel Hills Project
Hopewell Culture National Historic Park
Ohio Historical Society
Wayne National Forest

Oklahoma

Chickasaw National Recreation Area
Choctaw Nation – Bureau of Indian Affairs
Concho and Horton Agencies – Bureau of Indian Affairs
Eastern Oklahoma Agency – Bureau of Indian Affairs
Oklahoma City Office – Bureau of Indian Affairs
Oklahoma Fisheries Resources Office
Salt Plains National Wildlife Refuge
Tinker Air Force Base
Tishomingo National Fish Hatchery
Washita Battlefield National Historic Site
Wichita Mountain National Wildlife Refuge

Oregon

Bonneville Dam
Columbia River Gorge
Crater Lake National Park
Deschutes National Forest
Eugene District – Bureau of Land Management



sca spotlight: SCOTT WEAVER

SCA routinely sends young stewards to the park service but Scott took the opposite route, leaving a position at Yosemite to become an SCA crew leader. More than 25 years later, as Senior VP for Government Relations and Partnership Development, he is the reigning architect behind SCA's vast and singular partnership with the federal resource management dominion. He is also the father of two SCA alumni and a source of inspiration to his admiring colleagues.

See more sca spotlights at www.theSCA.org

- Forest & Rangeland Ecosystem Science Center
- Fort Clatsop National Monument
- Klamath Network – National Park Service
- Lakeview Resource Area
- Lewis and Clark National Historic Park
- Libby Dam
- McDermitt Creek
- Mount Hood National Forest
- National Historic Oregon Trail Interpretive Center
- Oregon Caves National Monument
- Oregon Department of Fish & Wildlife – Salem District
- Portland Regional Office – Bureau of Indian Affairs
- Siskiyou National Forest
- Siuslaw National Forest
- Tualatin River Wildlife Refuge
- Umpqua National Forest
- Vale District – Bureau of Land Management
- Wallowa-Whitman National Forest
- Willamette National Forest

Pennsylvania

- Allegheny County Parks – North and South Parks
- Allegheny National Forest
- Allegheny Portage Railroad National Historic Site
- City High Charter School
- Delaware Water Gap National Recreation Area
- Eisenhower National Historic Site
- Flight 93 National Memorial
- Friendship Hill National Historic Site
- Fort Necessity National Battlefield
- Gettysburg National Military Park
- Grey Towers National Historic Landmark
- Hawk Mountain Sanctuary
- Healcrest Farm
- Hopewell Furnace National Historic Site
- Independence National Historical Park
- Johnstown Flood National Memorial
- National Center for the American Revolution
- Nine Mile Run Watershed Association
- Northeast Regional Office – National Park Service
- Pittsburgh City Parks
- Pittsburgh Parks Conservancy
- Pocono Environmental Education Center
- Powdermill Nature Reserve
- Progress Fund
- Raystown Lake – Army Corps of Engineers
- Silver Lake Nature Center
- Southwestern Pennsylvania Watershed Association
- Urban Ecology Collaborative
- Upper Delaware Scenic and Recreational River
- Valley Forge National Historical Park
- Western Pennsylvania Conservancy
- YouthWorks

Puerto Rico

- San Juan National Historic Park

Rhode Island

- Rhode Island National Wildlife Refuge Complex

South Carolina

- Clemson University Coop Unit
- Congaree National Park
- Cowpens National Battlefield
- Cumberland Piedmont Network – National Park Service
- Fort Sumter National Monument
- Kings Mountain National Military Park
- Middleton Place
- Overmountain Victory National Historic Trail
- Sumter National Forest – Andrew Pickens Ranger District
- Sumter National Forest – Enoree Ranger District
- Sumter National Forest – Long Cane Ranger District

South Dakota

- Crow Creek Agency
- Huron Wetlands Management District
- Jewel Cave National Monument
- Lower Brule Agency
- Mount Rushmore National Memorial
- Wind Cave National Park
- Yankton Agency

Tennessee

- Andrew Johnson National Historic Site
- Big South Fork National River & Recreation Area
- Cumberland Gap National Historic Site
- Great Smoky Mountains National Park
- Nashville District Office
- Natchez Trace Parkway
- Overmountain Victory National Historic Trail
- Shiloh National Military Park
- Stones River National Battlefield

Texas

- Amistad National Recreation Area
- Aransas National Wildlife Refuge
- Attwater Prairie Chicken National Wildlife Refuge
- Audubon Texas
- Battleship Texas
- Big Bend National Park
- Big Thicket National Preserve
- Brazoria National Wildlife Refuge
- Buffalo Bayou Partnership
- Cedar Ridge Audubon
- Council for Environmental Education
- Dallas Independent School District
- Dallas Museum of Natural History
- Guadalupe Mountains National Park
- Heard Museum
- Hermann Park Conservancy
- Houston Arboretum and Nature Center
- Houston Conservation Collaborative
- Houston Independent School District
- Houston Wilderness Initiative
- Houston Zoo
- Katy Prairie Conservancy
- Lake Meredith National Recreation Area
- Lyndon B. Johnson National Historic Site
- Memorial Park
- Memorial Park Conservancy
- Mercer Arboretum and Botanic Garden
- Outdoor School at Camp Champions
- Padre Island National Seashore
- Preservation Dallas
- San Jacinto Battleground and Battleship
- Texas State Historic Sites
- Sea Turtle Group Project
- Sheldon Lake State Park and Environmental Learning Center
- Texas Coastal Watershed Program
- Texas Parks and Wildlife Department
- Region 4 Headquarters
- Trees for Houston

Utah

- Arches National Park
- Ashley National Forest
- Bee Biology and Systematics Lab
- Bryce Canyon National Park
- Canyonlands National Park
- Canyonlands Research Station
- Cedar Breaks National Monument
- Cleveland Lloyd Dinosaur Quarry
- Dinosaur National Monument
- Dixie National Forest
- Golden Spike National Historic Site
- Grand Canyon – Parashant National Monument
- Grand Staircase – Escalante National Monument
- Hovenweep National Monument
- Manti-La Sal National Forest
- Moab Field Office – Bureau of Land Management
- Monticello Field Office – Bureau of Land Management
- Natural Bridges National Monument
- Ourray National Wildlife Refuge
- Southeast Utah Group
- Uinta National Forest
- Wasatch-Cache National Forest
- Zion National Park

Vermont

- Button Bay State Park
- Green Mountain National Forest
- Isle La Motte Preservation Land Trust
- Pittsford National Fish Hatchery
- Jamaica State Park
- Marsh-Billings-Rockefeller National Historical Park
- Merck Forest & Farmland Center
- Mt. Ascutney and Wilgus State Parks
- Upper Connecticut River Basin – Army Corps of Engineers
- Vermont Department of Fish & Wildlife

Virgin Islands

- Virgin Islands National Park

Virginia

- Aegis Combat Systems Center
- Appalachian Trail
- Arlingtonians for a Clean Environment
- Assateague Island National Seashore
- Blue Ridge Parkway
- Booker T. Washington National Monument
- Colonial National Historical Park
- Cumberland Gap National Historic Site
- Fort A.P. Hill
- Fredericksburg & Spotsylvania National Military Park
- George Washington and Jefferson National Forests
- George Washington Birthplace National Monument

- George Washington Memorial Parkway
- Glenwood & Pedlar Ranger District – Forest Service
- Kiptopeke State Park
- Manassas National Battlefield Park
- Marine Corps Base Quantico
- Mid-Atlantic I&M Network – National Park Service
- Mount Rogers National Recreation Area
- NatureServe
- Petersburg National Battlefield
- Prince William Forest Park
- Richmond National Battlefield Park
- Shenandoah National Park
- Staunton State Park
- Virginia Department of Conservation and Recreation
- Virginia State Parks
- Volunteer Fairfax

Washington

- Alpine Lakes Wilderness
- Chief Joseph Dam – Army Corps of Engineers
- Columbia Cascades Support Office
- Colville National Forest
- Cowlitz Valley Ranger District
- Lake Roosevelt National Recreation Area
- Mount Baker-Snoqualmie National Forest
- Mount Rainier National Park
- North Cascades Institute
- North Cascades National Park Complex
- Okanogan National Forest
- Olympic National Forest
- Olympic National Park, Yakima Reservation
- Pacific West Coast Regional Office – National Park Service
- Turnbull National Wildlife Refuge
- Washington Department of Natural Resources
- Wenatchee National Forest – Cle Elum District
- Wenatchee National Forest – Naches Ranger District
- Yakima Tribe – Bureau of Indian Affairs

West Virginia

- Appalachian Trail Conference
- Canaan Valley National Wildlife Refuge
- Harpers Ferry National Historical Park
- Hatfield-McCoy Trail System
- Monongahela National Forest
- National Conservation Training Center
- New River Gorge National River
- North Bend State Park
- Potomac Heritage National Scenic Trail
- Preservation Alliance of West Virginia
- Stephen T. Mather Training Center – National Park Service

SCA's Land Management Partners

Wisconsin

- Apostle Islands National Lakeshore
- Chequamegon-Nicolet National Forest
- Great Lakes Agency – Bureau of Indian Affairs
- Great Lakes Exotic Plant Management Team – National Park Service
- Menominee Tribal Enterprises – Bureau of Indian Affairs
- Milwaukee County Parks
- Schlitz Audubon Center
- St. Croix National Scenic Riverway
- The Nature Conservancy – Wisconsin Field Office
- Urban Ecology Center

Wyoming

- Bighorn Canyon National Recreation Area
- Bighorn National Forest
- Bridger-Teton National Forest
- Devils Tower National Monument
- F.E. Warren Air Force Base
- Fort Laramie National Historic Site
- Fossil Butte National Monument
- Grand Teton National Park
- Medicine Bow Conservation District
- National Elk Refuge
- Natrona County Fire Mitigation Commission
- Prior Mountain Wild Horse Range
- Wind River Agency – Bureau of Indian Affairs
- Yellowstone National Park

International Programs

- Coastal Livelihoods Trust, New Brunswick
- Conservation of Communities and Rivers, Gatineau, Quebec
- Conservation Council of New Brunswick
- Ducks Unlimited Canada – Newfoundland
- Nature Trust of New Brunswick
- Quebec/Labrador Foundation – Blanc de Sablon and Harrington Harbor, Quebec, Canada
- Quebec/Labrador Foundation – Canadian Headquarters, Montréal
- St. Croix River International Waterway Commission – New Brunswick

Gifts to the Student Conservation Association provide support for SCA field programs and help to instill a strong conservation ethic in each succeeding generation of volunteers. These gifts help to protect valued national parks, forests

and urban green spaces, as well as cultural sites. Most importantly, they reflect the deep and enduring commitment of friends whose spirit continually inspires our work.

SCA is grateful for the support of more than 20,000 individuals, foundations, corporations, garden clubs and others. We appreciate their generosity, trust and commitment.

SCA's Generous Donors

Individuals & Community

The following individuals, family foundations, and community organizations provided gifts totalling \$250 or more to SCA between October 1, 2005 and January 10, 2007.

The John R. Twiss, Jr. Chairman's Circle (\$10,000+)

Anonymous (7)
Catherine D. Brown
David and Patricia Butler
Sheana and Lewis Butler
Markley C. Cameron
Paula Cleary and Paul Farrell
William and Janet Coleman
George M. Covington
Jerry and Diane Cunningham
Dean and Jenny Fischer
Estate of Harriet Jeffrey Ferguson
The Betsy and Jesse Fink Foundation
Kathleen D. Gill
Michael and Susan Gelman
Benjamin and Ruth Hammett
Grace H. Henderson
Wilfred and Sylvia Hill
Peter and Beverly Jost
Ellen Bayard Kennelly
Grace M. Kirchner
Nicholas and Jean Lamont
G. Gilbert Lindemann
Estate of Marjory A. McKinley
Richard and Mary Jeanne Munroe

Judith B. Nadai
Robert and Anita Norman
Eliot and Linda Paine
Wendy J. Paulson
Anne Powell Riley
Richard J. Resch
Surry P. Roberts
Joan S. Samara
Ellen S. Susman
Martha and Lee Talbot
Estate of Elizabeth A. Wood

The President's Council (\$5,000+)

Anonymous (8)
Adelson Family Foundation
Robert and Ferial Aldag
K. Tucker and Karen Andersen
Louise A. Armstrong
Eloise C. Barnett
Stephen and Ann Bartram
David and Inez Black
Jim and Ann Brandon
Thomas Collier and Siobhan Hanna
Harvey and Naomi Cohen
Clydia J. Cuykendall
Dancing Tides Foundation
Cindy and David Fitch
Beatrice and Thomas Frantz
Georgetown Garden Club
Peter and Jane Goedecke
Joshua R. Goldberg and the Goldberg Family Foundation
Beverly H. Goodman
Emma Leigh Goodwin
Martin and Debby Hale
Mrs. Vernon P. Harms
Edmund and Cis Hayes

CleoBell Heiple-Tice and Sidney Tice
Richard Hogan and Carron Sherry
Alan R. Jones
Mrs. R. B. Kemp
Edward F. Kirik, Jr.
Nick J. Labedz
Alison Rubenstein Levy
George and Ann Macomber
Barbara W. Meyer
John and Tashia Morgridge
Helen M. Mount
Nottawa Gas
Robert Stephens and Julie Packard Nonendowed Donor Advised Fund at the Community Foundation of Santa Cruz County

Fred and Liz Prescott
Bruce and Elizabeth Putnam
John Mosby Russell
William and Judith Scheide
Dorothy M. Somers
Herb Stanley
Phyllis J. Thompson
Trina Turk and Jonathan Skow
Neil and Sylvia Van Sloun
Charles S. Vosmik and Family
Joshua and Farley Whetzel
L. Wynne Wister
Sarah Zimmerman

The Elizabeth C. Titus Putnam Founder's Club (\$1,000+)

Anonymous (10)
John and Elizabeth Ackermann
Deanne Adams and Anthony Sisto
Adirondack Community Trust -

Evergreen Fund
Mary and Peter Alexander
Sharman and David Altshuler
Joseph Anscher
Robert and Constance Anderson
Alan and Judith Appelbaum
Appreciation of Earth and Animal Foundation, Inc.
James and Kathleen Arner
David Atkins
Guilford and Gwen Babcock
Valerie Bailey and Michael Gallagher
Debbie and Marty Barcus
Robert and Barbara Barger
Barnert Temple/Religious School
Tzedakah Fund
William and Lori Barns
Thomas and Currie Barron
Beacon Hill Garden Club
Gregory and Beatrice Benesh
Will Berliner
Alice and Edwin J. Bernet
The Linda Cabot Black Fund of the Boston Foundation
Robert Bland
Anthony and Josie Bliss
Jacqueline K. Bodin
Mark and Madeline Bodin
Paul and Mary Boghossian Memorial Fund
Mrs. Walter F. Brissenden
Elliot and Vicki Brown
Irene L. Brown
Kennett and Barbara Burnes
Cenie C. Cafarelli
Catherine Caneau
Mrs. George Carleton, Jr.
Harlow and Barbara Carpenter
Elizabeth C. Cauley

J. Phillip and Nancy Cayford
Marta A. Chase
Anne Childs and Charles H. Collins
Carin Chow
Jean Aubuchon Cinader
Clara G. Cist
Heinke K. Clark
Sherren Clark
Douglas and Kathryn Cochrane
Christine M. Coffin
Richard and Ruth Colwell
Sylvia and John Constable
Bill Crane
Edmund and Leslie Cronin
Howland and Mary Crosswell
Elizabeth M. Culhane
John and Elizabeth Cullen
Curtis and Dorothy Cushman
Paul and Paulette Cushman
Roderick and Verena Cushman
Susan Cushman
Anthony R. Dal Nogare
Barbara Putnam Daly
Kaaron Jody Davis
Donald and Leora DeFord
Roy and Annina Demmon
K. C. DenDooven
The Denver Foundation
Charles R. Dibb
George and JoEllen Doering
Mary C. Drazey
Dublin Riding/Walking Club
Dayton Duncan
Shirley Durst
Sylvia A. Earle
Dr. and Mrs. David E. Eggert
Monika M. Eisenbud
Emory University
Judith S. Solomon Engelberg
David D. Fawcett
Andrew J. Fisher
Jane Fisher
Whit Fletcher
Peter and Janice Ford
The Founders Circle of Sarasota
Florence B. Fowlkes
Henry J. Fox Fund
Charles and Linda Frick
Joyce Friedman
Kathryn S. Fuller

Pull in a High Return and Save Taxes with an SCA Gift Annuity



Pull in a high return for life from a gift of cash, stock or mutual funds (minimum \$5,000). You can begin to receive your annuity payments immediately. Or you can "push them off" until a later date, increasing your future annuity rate.

You will get an income tax deduction for a portion of the value of your gift. And part of your annuity may be completely tax-free!

Your gift will empower young people to pull together, working to protect the environment for years to come.

For further information, please contact Hugh Montgomery toll-free at 1-888-722-9675, ext. 151 or e-mail hmontgomery@theSCA.org.

Sample Immediate Single-Life* Rates

Age 65 - 6.0%	Age 80 - 8.0%
Age 70 - 6.5%	Age 85 - 9.5%
Age 75 - 7.1%	Age 90 - 11.3%

Example: Give \$10,000 at age 75 and get \$710/year (7.1%) for the rest of your life.

*Two-Life rates also available

Sample Deferred Rates

Age Now	5 Yr. Deferral	10 Yr. Deferral
55	7.3%	9.9%
60	7.7%	10.7%
65	8.3%	11.7%

Sarah and William Fuller
G.A.G. Charitable Corporation
Courtney Knight Gaines
Foundation, Inc.
Garden Club of Mount Desert
Fraser and Jim Gilbane
Gilder Foundation, Inc.
John P. Glaser
Mr. and Mrs. Ralph I. Goodwin
Lisa and Leon Gorman
Nancy W. Grady
Holly Gray

Sallie and Dick Griffith
Daniel and Alice Hall
Hamil Family Foundation
Graham and Joanne Harrison
Francis and Serena Hatch
George and Marina Hatch
Margaretta and Jerry Hausman
Josephine Hicks
William W. Hildreth
Harvey and Christina Hill
Roger S. Hillas
Robert and Lisa Holley

Patricia and Noel Holmgren
Steven C. Holtzman
Judy and Larry Howard
Harold and Elizabeth Janeway
Ronald and Susan Janis
Brent J. Jaster
Harvey G. Johnson, Jr.
Philip T. Johnson
Johnson-Fortin Charitable Trust
Julian M. Babad
Jupiter Island Garden Club Inc
Carole Kaminsky

Timeline

1957-2007

1957 SCA places first volunteers at Grand Teton and Olympic National Parks



1960 SCA expands to Zion National Park and Cedar Breaks National Monument



1964 SCA incorporates, names former NPS Director Conrad Wirth as Chairman, Founder Elizabeth C. Titus (Putnam) as President

1964 SCA HQ established at Sagamore Hill, historic home of Theodore Roosevelt



USA

24

1958 Alaska becomes 49th U.S. state

1959 Hawaii becomes 50th U.S. state

1961 Acid rain confirmed as environmental threat

1962 Rachel Carson's *Silent Spring*

1964 The Wilderness Act passed

25

SCA's Generous Donors

Myron Kaplan and Annette Hollander
The Charles and Roberta Katz Family Foundation
Marjorie R. Kaufman
Emily W. Kelly
Phyllis I. Kerdasha
Mrs. Alexander Keyes
George P. Kinkle III
Sidney R. Knafel
Nancy R. Kollock
Carol M. Lane
Elise S. Lapham
Gary and Carol Lavering
Marta J. Lawrence
Rose LeBlanc and Andrew Terragni
Larry and Donna Lesh
Yvette Leung
John and Jane Lewis
Dorothy Lichtenstein
Caleb Loring, Jr.
Michael Lowden
John and Caroline Macomber
Neil J. MacPhail
Kent and Sherry Mangold
Beatrice G. Manice
Carol Master and Sherry Mayrent through the Corners Fund
John and Ruth Matuszeski
Brian and Ann Mazar
David and Kathleen McCarron
Jeffrey and Kathy McCarron
John and Bette McCarron
Robert and Lori McCarron
Patrick McGlynn
Paul F. McQuade
Friedrike Merck
Patricia Merritt
Maurice R. Meslans and Margaret E. Holyfield
Jan M. Montgomery
Robert and Helen Moody
Wayne and Hope Moore
Bette D. Moorman
Marion B. Moreton
Douglas Muder and Deborah Bodeau

Kingsley H. Murphy Family Foundation
Nathan and Elizabeth Johnson
New Scotland Garden Club
Paul and Antje Newhagen
Oakland Funds Inc.
William A. Olson
Edward and Eunice Ordman
Robert A. Page, Jr.
Franklin and Margaret Parker
Craig Payne
Jeffrey N. Pennell
Dale and Marian Penny
Ira and Carole Pittelman
Sidney L. Posel
Philip Preston
Patrick and Rosalinda Raheer
David H. Raymond
Signa L. Read
Jeffrey Reene
Gene and Janice Reineke
Elizabeth Reynolds
Charles C. Richardson
Robert and Kathryn Riddell
Esther H. Rivinus
Patricia G. Robinson
Arthur Rock and Toni Rembe
Mr. & Mrs. Laurance Rockefeller, Jr.
Jane Rogers and Michael Fisher
Tom and Cathy Rohloff
Elinor and Murray Rust
S & G Foundation
San Fernando Valley Audubon Society
Santa Monica Bay Audubon Society
Kathryn and Vishnoo Shahani
Nancy Shaidnagle
Shaker Lakes Garden Club
Tatsuo Shirane
Reginald and Lynn Shiverick
Caroline N. Sidnam
Sisterhood of the Holy Nativity
David and Joan Sloan
Charles W. Smith
Gerard and Nan Snyder
Mrs. Sydney B. Spofford
Dorothy Stancliff
Mrs. Ernest M. Stanton

Louis W. Staudenmeier, III
William T. C. and Cornelia Stevens
Paul and Joyce Stevens
Keith Stobie and Lois Watson through the Community Foundation of New Jersey
Glenn and Alison Sullivan
Robert L. Sutherland
Catherine G. Symchych
Mr. and Mrs. Paul A. Tarabek
Margaret L. Taylor
Ronald and Michelle Tenny
Ann W. Thayer
Christopher and Carol Thomsen
Elsie P. Van Buren
Hall and Deborah Van Vlack
Elizabeth S. Van Vleck
Helene P. Victor
Grace Lyu Volckhausen
Elizabeth F. Wadsworth
Susan Wagner
Enid N. Warner
James and Jean Watt
The Weeders
Elizabeth B. Weinstock
Abby N. Wells
Walter and Luella Wells
Frederick H. and Constance West
Steven and Elaine White
Robert C. Wolf
Woman's National Farm & Garden Assoc.
Carolyn Woodbury
Sara Wragge
Christopher B. Wren
Melba D. Wright
Marilyn E. Zaklan
Robert B. Zuckert

Earth & Eagle Society (\$500+)

Anonymous (9)
Bruce and Susan Ackerman
Elizabeth and William Adams
Mrs. C. Kirby Alexander
Mary and Peter Alexander
Huntington O. Allen
Allyn's Creek Garden Club

Mr. and Mrs. Joel B. Alvord
Jeanne Anderson and Russell Hanbey
Alan and Helen Appleford
Marsha F. Armstrong
Marian Ashman
Mr. and Mrs. Russell Atha, Jr.
Elizabeth Atkins
Samuel and Natalie Babbitt
John F. Baines
Stephanie and Peter Baker
Sharon Z. Barry
LaVonne and Paul Batalden
Gerald and Linda Becker
Michael J. Bell
Melanie Beller
Mr. and Mrs. David Bellet
Mary H. Bennett
Peter and Jane Bentley
Derrick Beracy
William and Katherine Beyer
Alpine Chandler Bird and Donald Bird-Riptide Fund at the Boston Foundation
Rosemary A. Blackstone
Peter P. Blanchard III
Blue Streak Fund
Elspeth G. Bobbs
T. William and Beatrice Booth
Mike B. Brady
Emily B. Bramhall
Paul Brettschneider and Mabel Tang
Charlotte J. K. Brewer
James Brophy
Carolyn Brown
Greta P. Brown
Katherine S. Brown
E. Homer Brugge
Alfred and Christine Burnard
Eric and Mary Calhoun
Jack and Jill Campbell Fund of the San Diego Foundation
Roald and Lois Cann
John and Joan Carpenter
Nancy C. Carrell
John and Patricia Case
Thomas and Carolyn Cassilly
Emily S. Castner
Lowell and Patsy Chamberlain

Jane N. Chandler
Renate Chapman
Nancy Cherry
Steven Chulik
Robert and Suzannah Ciernia
Carnzu A. Clark Fund of the El Adobe Corporation
Mona Clayton
Cleveland Natural Science Club
Susan P. Crofut
Kenneth H. Crooks
B.W. Catlin Cunningham
Emma L. Dana
Paul and Shirlee Daube
Gordon F. Davies
Virginia A. Dean
Jeffrey Dennis
Mary Ann Desmond and H. William McKee
John and Brenda Dick
The Hardy Hill Fund of the New Hampshire Charitable Foundation
Gerald L. Dickinson
David and Lori Dodwell
William and Karen Dow
Louise I. Doyle
Mrs. Philip Duryee
Mr. and Mrs. James F. Earl
Thomas D. Easley
Eastern Analytical, Inc.
Melinda and Dale Egeberg
Alayne Evans
Evergreen Garden Club
Exeter Area Garden Club
Robert Faiman and Lynne Pentler
Harlow Farmer and Nina Lian
Richard and Annette Feldman
Sarah Ferguson
Mr. and Mrs. Fritz Fischer
Jean Flood
George K. Floyd
Elizabeth S. Ford
Eve D. Fout
Cornelia D. Fraley
James and Alice Frost
Garden Club of Barrington
Garden Club of Cleveland
Garden Club of Somerset Hills
Lloyd Genskow

Lewis H. Geyer
Mr. and Mrs. Nicholas T. Gilbert
Aradian Gill and Anna Hannon
Frances G. Ginsberg
Jonah and Sallie Gitlitz
Robert and Annie Graham
Stephanie R. Gray
Green Fingers Garden Club
Lumina Greenway
Kenneth A. Griffin
Richard E. Griffith
Harriet R. Grose
Lyn R. Haber
Reginald Hagood and Ann Pina-Hagood
Natalie Hamill
Kevin Hamilton and Darlene Brown
Jane L. Hamrick
Mr. and Mrs. Rod C. Handeland
Albert A. Hanes and Robert E. Hanes
Margaret P. Hanrahan
Lois Hansen
Stanley E. Harris, Jr.
James and Mary Harrison
Pembroke Harwood
Amanda L. Hayhoe
Bruce and Miranda Henning
Nancy Heymann
Arthur and Lois Hill
Joyce V. Hiller
Richard and Susan Hinshon
Aaron Hoard and Jaime Greene
Timothy V. Hoard
Mark L. Hofmann
Dorothy B. Hunt
David and Jane Huntington
Eileen B. Hutcheson
Mark Ignaut
Masayoshi Itoh
Robert Rutemoeller and Mary Sue Ittner

Mrs. M. W. Jacobsen
William I. James III
Hannelore and Konrad Jarausch
Johnson Family Foundation
Henry A. Jordan
James G. Kamitses
Edward J. Kandl
Kristine M. Karnos
Leah R. Karpen
Matthew Kasprzak
Dennis and Joanne Keith
Kevin D. Keith
Lisa Keith and Allan Karp
Barbara M. Keller
Emily W. Kelly
Michael J. Killien
Russell and Sandra King
Robert and Rachel Kinicki
Ralph and Marjorie Koldinger
Thomas L. Korzeniowski
Mr. and Mrs. Jeffrey Kovalic
Ardell E. Kuchenbecker
Milton H. Lackey, Jr.
Helen P. Ladd
Garet P. Lahvis
Lake Forest Garden Club
Walter G. Lake
William J. Lannin
Pamela and Harold Lassers
Sean Lee
John Leinenweber
Hollis Lenderking
Elizabeth P. Lent
Nancy and David Levi
Dr. and Mrs. Richard Lewis
Jeanne M. Lockett
Jane A. Lombard
Dr. and Mrs. James A. Longo
Kathryn A. Lynn
Walter and Ruth MacGinitie
Pamela Manice
Richard and Helen McCammon
Lisa W. McClean
Virginia McCulloh
Mike and Deanna McMillian
Christa M. McReynolds
Barbara J. Meislin
Elizabeth Merck
Craig Minor
Mr. and Mrs. Jack Moline

Richard and Joan Moll
Charles and Mary Louise Montgomery
Thomas G. Mooney
William and Mary Morrill
Virginia L. Mouw
Mr. and Mrs. Reuben Munger
John and Caroline Murphy
Mr. and Mrs. Larry L. Murphy
Jeremy H. Nathans
Charles L. Nelson
James C. Nelson
Lyle E. Nelson
Noanett Garden Club
North Country Garden Club of L.I.
Maria and Jose Olmos
John K. Orndorff, Jr.
JoAnne E. Overleese
Frank C. Parcell, Jr.
Alfred H. Peet
Sandra Perkins and Jeffrey Ochsner
Daniel Pierce
John L. Piersol
Anne Pinkney
Paul and Susan Pintus
Pauline R. Plesset
Margaret L. Porter
Elizabeth Price
Sean Lee
Timothy W. Radder
Gloria Raffo
Robert and Wendy Reasenber
Redmond Cycling Club
Mr. and Mrs. Jeffrey Reene
Grant and Joanne Reynolds
Joshua G. Rice
Katharine Richardson
Linda Richter
Miss Alice M. Ridenour
Beverly and Barbara Ridgely
Susan M. Rikalo
Margaret S. Robbins
Dana and Martah Robes
Rochester Garden Club, Inc.
Dan L. Rogalla
Rogers Family Trust for the Lakes Region of the New Hampshire Charitable Foundation
Virginia Jo Rogers

SCA's Generous Donors

Timeline

1957-2007

SCA

USA

26



1967 SCA adds first non-government site, Merck Forest and Farmland Center, VT

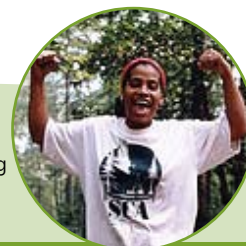
1967 Bald eagle, grizzly bear named to Endangered Species List

1968 SCA begins partnership with U.S. Forest Service

1968 National Trails System Act passed

1968 SCA launches national outreach effort to engage young people of color in conservation

1968 Edward Abbey's *Desert Solitaire*



1969 Cuyahoga River in Cleveland catches fire

1970 First SCA co-ed crews



27

SCA's Generous Donors

Stephen M. Rose
Eleanor R. Ruocco
Rusticus Garden Club
Rye Garden Club
J. Victor Samuels
Barbara T. Sandford
Mr. and Mrs. Jay Sandrich
Alvin and Harriet Saperstein
John and Heather Satrom
Mr. and Mrs. Charles Sawyer
Fannette H. Sawyer
Konrad P. Schmidt
Mr. and Mrs. Ford Schumann
Arent and Jean Schuyler
Sherwood and Mildred Schwartz
Frances G. Scott
Kandis Scott
Lucretia L. Scott
Curtis L. Scribner
Richard Seaman and Liza Draper
Clydene J. Shepherd
Robert D. Sherman
John and Elizabeth Shields
Bette H. Silver
Clayton and Susan Simmers
Sally and Dave Skimin
Miriam G. Smead
Alistair and Mary Smith
Bruce D. Smith
Kathleen Soester
Michele and William Sooy
Southampton Garden Club
Helen Baker St. John
Robert and Janet Stanton
Joshua Stearns and Erica Carlson
Eric and Jeanne Steinhauer
Douglas and Joan Stewart
Eleanor Storer
Stephen M. Strachan
Theresa Sutter
Robin A. Sutton
Suzanne Swanson
Cyrus and Barbara Sweet
Szekely Family Foundation
Harri and Ann Taranto
J. Carole Taxis
Richard E. Taylor
Tara Taylor and Thomas Currier

Miriam I. Thomas
Kerry and Richard Thorne
Werner E. Tietjen
Jane Timmons-Mitchell
Ellen Tohn and John Harper
Lydia and Henry Toll
Alvin and Janine Tollestrup
Marsha and Donald Towns
Timothy T. Turner
Robert and Lisa Unsworth
Karen M. Untz
Robert Van Der Stricht
William and Ann Vanderbilt
Kenneth Vanderhave
Janet M. Vasilius
Anna May Vaughan
Elizabeth L. Venrick
Merle J. Vogel, Jr.
The Lulu May Lloyd Von Hagen
Foundation
Catherine V. Von Schon
Mr. and Mrs. Eliot Wadsworth
Guy A. Wadsworth
Isabelle Wald
Nancy E. Warner
George H. Warrington
Robert and Helena Warrington
James Wassom
Sylvia B. Weaver
Richard and Betsy Webb
David Webber
Charlotte Wei
Dale Wendel
Glenn White
Mark Whittlesey
A. Tappan and Robin Wilder
Mrs. James L. Wiley
Cheryl Wilfong and
William McKim
Jed and Perry Williamson
Hannah B. Wilson
Sandra L. Winn
Anthony and Bertie Woeltz
Susan M. Womeldorf
Woodside-Atherton Garden Club
Elizabeth Woolley
Melba D. Wright
Frank O. Wyse

Sponsor's Circle (\$250+)

Anonymous (10)
Hugh T. Adams
Alaska Wildland Adventure, Inc.
Brad Alexander
David and Sonia Alexander
Garden Club of Allegheny County
Aileen T. Allen
Dr. and Mrs. Michael H. Allen
Ronald E. Allin
Milton L. Almquist, Jr.
Roy Alper and Judith Alper
Alta Vista Garden Club
America's Charities
Cynthia A. Andersen
David Anderson and
Priscilla Paton
Mary S. Ankner
Antietam Women's Ensemble
Lynn Appelbaum
Paul Appelbaum and
Lee Thompson
Maryann P. Armour
Mr. and Mrs. Aubrey Arnn
Jeffrey D. Arnold
Ashland Garden Club
Robert W. Atwood
Anne M. August
H. Ben Auslander
Mr. and Mrs. Jonathan Avery
Mr. and Mrs. George J. Bachrach
Backcountry Horsemen
of California
William Bain
Mr. and Mrs. Jesse R. Baker
Virginia G. Ballantine
Donald H. Ballou
Robert and June Bargar
Dutch and Hilary Barhydt
James and Carolyn Barnshaw
Bruce Barrett
Herman Barros
Mr. and Mrs. Richard Barthelmes
Robert J. Baskerville
Robert and Gail Bates
James R. Baur
Nancy A. Bavec
Kaye A. Beall

Roxanne Beardsley
Donald Beattie
Ronald and Jeanne Beatty
Barbara and Clarence Beaver
Shirley and Grant Beckfield
Bedford Garden Club
Mary L. Bellinzier
Jean M. Bennett
Mr. and Mrs. Frederick S. Benson
Frank Bequaert
Donald and Janet Berg
Daniel Berkman
Mary Ann Berliner
Jack R. Bertges
Rose S. Bethe
Cynthia and Mario Bevacqua
Mr. and Mrs. Neal R. Bierbaum
Stephanie Bill
Thomas J. Bird
William G. Bittler
William and Mary Black
William and Lois Black
Gail Bliss
Jane M. Bloom, M.D.
Sharon D. Bloomgarden
Janet and E. U. Bohlen
James Bolin and
Catherine Stempien
Gregory H. Bonyng
Mr. and Mrs. Charles Bookwalter
Melissa P. Bosia
Jennifer and John Bost
Mrs. M.W. Bouwensch
Lois R. Bowker
A. Stephen Boyan, Jr.
Dr. and Mrs. Donald W. Boyer
Lucy R. Boyle
Mr. and Mrs. Eric Bradford
Timothy and Phyllis Brady
Rena Bransten
Lillian Brem
Ed and Joan Brenton
Margaret Brenton
Robert L. Brink
David M. Bristol
Albert and Elinor Britton
Mr. and Mrs. Edward Broderick
Robert and Shelagh Brodersen
Edward and Joan Bromage
Alice L. Brown

Charles and Laurene Brown
Deirdre Brown
Dorothy A. Brown
Michael and Margaret Brown
Myron D. Brown
Rogene A. Buchholz
Tom Bucht
Wilbur and Cecilia Bullock
Mary C. Bunge
Paul Burdick
Janet R. Burhans
Geraldine L. Burk
Cynthia Burkhart and
Jay Williams
Marjorie V. Butcher
Helen M. Cake
Barbara M. Calabro
Mrs. David Calfee
Mr. and Mrs. William G.
Campbell
Marvin C. Carlberg
Douglas E. Carlile, Jr.
Carmel-by-the-Sea Garden Club
Hugh Cassidy
John Chaney
Jayni and Chevy Chase
Ellen Chatterjee
Jude Chauvette
Mr. and Mrs. Paul Chelminski
Ed and Shirley Cheramy
George Bowles and
Elizabeth Cheyney
Chicago Park Garden Club
David and Claudia Chittenden
Michael D. Church
Betty Churchill
Michael Churchill and
Tasha Stonorov
Jean L. Churchman
Donna J. Clapp
Alfred Clark and
Patricia Andre-Clark
Mrs. Hugh K. Clark
Margaret and Paul Clark
Timothy Clark and
Hannah Sistare
Clark-Mortenson Agency, Inc.
Denise J. Clavette
Michael C. Cleavenger
Robert M. Clements

Mary E. Clemesha
Peggy Clews and David Beutler
Margot P. Close
Robert and Philippa Coates
Virginia M. Coggeshall
Shelley Cohen
Frances Cohen-Knoerdel
Francis G. Coleman
Pamela S. Coleman
Mr. and Mrs. Edward W. Collins
William and Lynne Combs
Conner Family Fund of the
San Diego Foundation
Rev. and Mrs. Harvey G. Cook
Ian M. Cooke
Thomas A. Cootz
Nana Corfield
Ann M. Corrigan
William and Virginia Cowles
Nan and Robert Crain
Stuart and Ellen Croll
Amanda L. Crookshank
Irene Crosby
Marcia and Joseph Crosby
John and Karen Crotty
Ann and Dougal Crowe
Gordon Cruikshank
Fanny P. Culleton
Dr. and Mrs. James Cuno
Bena L. Currin
Fernie J. Dalby
Lewis and Betty Dana
Tamara Davidson
Damien M. Davis
James D. Davis
Deanna K. Dawson
Ron and Sandra De Crescent
Vici DeHaan
Robert Denninger and
Juanita Bustamante-Denninger
Mr. and Mrs. Philip DeNormandie
Harry DePan
Miss Margaret E. DePopolo
Jayne H. Dewey
Elisabeth S. Dewing
Rolf and Nora Diamant
Charles Dickey and
Sheila Wyckoff-Dickey
Amy T. Dickinson
Gerald L. Dickinson

Diggers Garden Club
Frances A. Dillingham
Daniel Dinell
Sandra Dods
James Dodson
Jerald and Dee Doochin
Scott and Debra Dooley
Alice Doolittle and
Timothy Pearce
Elizabeth Dorsey
Stephen T. Doubleday
Paul R. Douglass, D.V.M.
Wena W. Dows
Hermine L. Dreyfuss
Michele L. Dreyfuss
Gregory P. Driscoll
Frances W. DuBose
Henry C. Dudley
Jane C. Dudley
Ellen Dugger
The Cerf-Dunbar Fund of
The Community Foundation for
the National Capital Region
Colin G. Dunkeld
J. Laurence Dunn, Jr.
Mr. and Mrs. Guy Dunphey
Rosa W. Durando
Peter Durant
Dalton and Roshanak Dwyer
Peter Eberhart
Ruth L. Eckert
Robert W. Eckland
Dawn Edmiston-Strasser
Jessica and Robert Einhorn
Jeanne W. Eisenstadt
Mark Eisner, Jr.
William T. and
Catherine G. Elliott
Jonathan K. Ellis
Eric and Elizabeth Emery
Paul C. Enenbach
John and Helen Engemann
Russell and Patricia Erickson
Alan and Myra Erwin
Dr. and Mrs. Horacio Fabrega, Jr.
Daniel A. Facilla
Fairfield Garden Club
Margaret Faris
Richards K. Farnham
Mr. and Mrs. Richard C. Farra

Gault and Phyllis Farrell
Mr. and Mrs. Peter S. Farrell
T. Lux Feininger
Lisa J. Felix
Alexander and Catherine Felton
Nancy H. Ferguson
Sylvia and Ronald Ferry
Kevin T. Fink
Robert C. Fleischer
Mrs. Charles Fleischmann
James R. Fleming
Richard D. Flinn
Gizella A. Flippin
A. R. Foote
Barbara J. Foote
Michael J. Ford
William Forgey
William and Janice Forsyth
Michael L. Fort
Susan Fort and Frank Dammann
Peter Foster
Mr. and Mrs. Douglas F. Foster
Four Counties Garden Club
Jessie Fournier
Teri Foust
Frances H. Fowler
Miss Jacqueline Fowler
Kristen and James Fox
Anne S. Frantz
Arthur W. Freidinger
Ed Friedman
Jeffrey Frye
Arthur Cabinet and
Christina Paxson
Marie L. Gaillard
Robert T. Gannett
Kenneth and Patricia Gantz
Garden Club of
Irvington-on-Hudson
Garden Club of Morristown
The Gardeners
Caroline Garmon
Arnold Garrison
Jane F. Garry
Stephen R. Gawne
Clifford and Shirley Gay
Burkhard Gebauer
John W. Gerhart
Dennis and Mary Ghan
Janet W. Gildermaster

SCA's Generous Donors

Timeline

1957-2007

SCA

USA

28

1970 SCA HQ moves to Vashon Island, WA

1970 EPA established



1970 First annual Earth Day observed

1970 Clean Air Act signed



1971 Youth Conservation Corps (YCC) modeled after SCA

1971 Biosphere 2, Arizona



1972 National Park Service establishes SCA-influenced Volunteers in Parks (VIP) program

1972 Clean Water Act passed

1972 DDT banned



29

SCA's Generous Donors

Douglas E. Gill
 Charles Gilroy
 Jon E. Gimpel
 Carlyn E. Goettsch
 Peter Goldman
 Thomas R. Goldsmith
 Jay Gonzalez and Jenny Richlin
 Mary and John Goodrich
 Carol E. Gordon
 Lee Gorka
 Robert and Lois Gosse
 William Buckley and
 Rebecca Gould
 Lorraine Grace
 Bruce and Elizabeth Grant
 Elizabeth W. Grant
 Barbara Green
 Keith Greenstreet
 Greenwich Garden Club
 Charles H. Gregg
 Betty G. Gregory
 Mr. and Mrs. Nicholas P. Greville
 Mr. and Mrs. Gordon H. Griffith
 Lucile Griffiths
 Nina B. Griswold
 Groundwater Sciences Corp.
 Denise M. Guillemette
 Christopher J. Gurr
 Charles P. Gushue
 Thomas and Mary
 Haak-Frendscho
 Ann D. Haase
 Stephen Halper
 Charles M. Hamann
 Michael F. Hampton-Fitzgerald
 John and Elizabeth Hanes
 David Haney
 Mr. and Mrs. John Hanify
 Jeffrey and Kathleen Hansen
 Nancy Glenn Hansen
 Mr. and Mrs. Michael Hanson
 Dr. and Mrs. Paul H. Hardy
 Ron and Joanne Haring
 Christopher and Sarah Harris
 Margaret S. Hart
 Frances Harte
 Dr. and Mrs. Michael A.
 Hartenberg

Eleanor A. Harvey
 Henry R. Hatch III
 Dorothy J. Havighorst
 Pamela Hay and William Stein
 Kathryn Hayes
 Robert H. Hayes
 Toi Hayes
 John M. Headley
 Dr. and Mrs. Curtis P. Hecht
 Christine M. Heckemeyer
 Alexander Heger
 Anne Heine
 Mr. and Mrs. Thomas Heine
 Mr. and Mrs. Arnold M. Heiser
 Mrs. August C. Helmholz
 Kim Henning
 Dr. and Mrs. William O. Henry
 David and Elizabeth Herb
 Mary D. Herberich
 Donald M. Herman
 Marjorie C. Hermans
 Mr. and Mrs. Joseph A. Herron
 Paul Herther
 Ulrich Hewer and Cheryl Kariya
 John and Hermi Hiatt
 Richard and Suzanne Hildner
 Norman E. Hill
 John Hirschi
 Krista Hoekstra
 Janice J. Hoffman
 Mr. and Mrs. E. Roberts Hofsas
 Michael E. Hohmeyer
 Mr. and Mrs. Lynn Holland
 Mary A. Holland
 Wayne and Robin Holland
 Steve and Marcia Holtan
 Henry O. Hooper
 Amanda W. Hopkins
 Nancy and Tsukasa Horie
 Douglas Horst and
 Maureen Phillips
 Hortulus Garden Club
 Kenneth and Debra Hover
 Charlotte D. Howard-Holland
 Mr. and Mrs. John F. Howe, Jr.
 Barbara V. Howell
 Joyce Howell
 William L. Hudson
 Thomas and Ginny Hudspeth
 Mr. and Mrs. D. R. Hughes, Jr.

Ruth J. Hughes
 Mrs. Richard L. Hughes
 Gretchen S. Hull
 Mr. and Mrs. J. L. Hultgren
 Laurie A. Humphrey
 Harry and Mary Humphry
 John M. Hunter
 Katherine Hurd
 Winifred Hurst
 Lorraine M. Hurt
 Mrs. William A. Hurt
 Alice J. Imbur
 Richard E. Imershein
 Marjean A. Ingalls
 Mr. and Mrs. Philip N. Israel, Jr.
 Nancy Issel-Mayes
 Beryl B. Jacobs
 Morris Janowitz
 Mr. and Mrs. Thomas D. Jarvis
 Katherine J. Johnson
 Marilyn Johnson
 Mary L. Johnson
 Sue W. Johnson
 Mr. and Mrs. John F. Johnston II
 John W. Johnstone, Jr. and
 Claire L. Johnstone
 John A. Joll
 Paula A. Jonas
 Marian D. Jones
 Nancy J. Jones
 Mr. and Mrs. William R. Joslin
 Judy Judd
 John and Nancy Jungerman
 Robert G. Kachman
 Susan T. Kaemmerlen
 Robert and Kyuja Kafka
 Leib Kaminsky
 Nancy Kappler-Foster
 M. Doris Kauffman
 Joan A. Kedziora
 Ian F. Keith
 Elizabeth A. Kellogg
 Drs. Kevin and Pamela Kelly
 George F. Kephart
 Elizabeth Kessel and
 Edward Levine
 Dennis M. Killian
 Don and Priscilla Kimball
 Effie Brewer Kimball
 Lisa R. King

Mr. and Mrs. Charles O.
 Kingsbury
 Margaret L. Kinasian
 Elizabeth Kiriazis
 Rein and Carla Kirss
 Sandra M. Klepacki
 Vernon L. and Diane R. Kliever
 Robert M. Kline and
 Elaine L. Mills
 Michael and Patricia Klowden
 Nathan Knight
 Ruth L. Knipe
 Andrew Knox and Valerie Daniels
 Christopher G. Knox
 Jeffrey W. Knutson
 Joseph and Veronica
 Koenigsberger
 Reuben Koolyk and Frances Flug
 Bailey J. Korell
 Christine and Noel Korten
 Alan and Pamela Kosansky
 David Kotz and Pamela Jenkins
 Kathryn M. Kowalski
 Ruth S. Kram
 Steven and Sandra Kratville
 Ellen B. Kritzman
 Robin Krivanek
 Dr. and Mrs. Hans E. Krusa
 William A. Kumpf
 Malcolm and Doris Kurth
 Barbara C. Kyse
 Paul Labounty
 Ruth H. Lacy
 Lake Minnetonka Garden Club
 Frank and Carol Lanaghan
 Jonathan and Bonnie Landman
 Jean Lane
 Roger and Sue Lang
 Lisa LaPointe
 Charles Latham, Jr.
 Philip A. Lathrap
 Mr. and Mrs. R.L. Latterell
 Marvin Laurence
 Miss Belina L. Lazzar
 Joan and James Leary
 Adele G. Lebowitz
 Gregory S. Lee
 Jonathan and Shelah
 Lehrer-Graiwer
 Suzann M. Leininger

Charles A. Leiwant
 Paula and Norman Lesser
 Ross Levinsky
 Levy-Huey Fund
 Mr. and Mrs. Robert Lewit
 John and Sue Lillie
 Frank W. Lin
 Elizabeth and Henry Lind
 Phyllis Lindley
 Little Compton Garden Club
 The Little Garden Club
 Lee and Carrie Little
 Geri Loe
 Jennifer Loggie
 Marjorie R. Long
 Hilary G. Lord
 Susan G. Loring
 Robert W. Loudon
 David and Nora Lubin
 Thomas and Deborah Lund
 Gordie and Lynn MacDermott
 Kathleen F. MacDonald
 Anne K. MacDowell
 Judith A. Mack
 Doris M. MacLachlan
 John and Kristin Macomber
 Stanley and Ann Magagnosc
 Donna G. Maher
 William A. Kumpf
 Malcolm and Doris Kurth
 Barbara C. Kyse
 Paul Labounty
 Ruth H. Lacy
 Lake Minnetonka Garden Club
 Frank and Carol Lanaghan
 Jonathan and Bonnie Landman
 Jean Lane
 Roger and Sue Lang
 Lisa LaPointe
 Charles Latham, Jr.
 Philip A. Lathrap
 Mr. and Mrs. R.L. Latterell
 Marvin Laurence
 Miss Belina L. Lazzar
 Joan and James Leary
 Adele G. Lebowitz
 Gregory S. Lee
 Jonathan and Shelah
 Lehrer-Graiwer
 Suzann M. Leininger

Charles K. McClure III
 Joel and Jean McCormack
 Eloise McCormick
 Dr. and Mrs. Dino E. P. McCurdy
 Wallace McCurdy, Jr.
 Ruth E. McGrath
 John W. McGreevey
 Robert W. McGuire
 Henry and Edith McHenry
 Kathryn K. McNeil
 Ruth C. Mead
 David M. Meeker
 Catherine A. Mehler
 Peng-Siu and Elaine May
 Cindy Melter
 M. Michael Menzel and
 Kathryn Iverson
 Elizabeth S. Merriam
 Andree Miller Campship Trust
 Charles and Janice Miller
 Ruth Miller
 Sarah E. Miller
 Bettie and Seymour Mintz
 Eleanor B. Monaghan
 Hugh and Stephanie Montgomery
 Kenneth G. Moonie
 Maxine R. Moore
 Richard and Barbara Moore
 Hannah B. Morehouse
 Katharine B. Morgan
 Peter A. Morgan
 Donald and Ann Morrow
 Therese Moss
 Laura J. Mosso
 Kenneth and Katharine
 Mountcastle
 H. Stuart and Elizabeth Muench
 Michael and Cathy Muha
 Fitzhugh Mullan
 John and Joy Mullen
 Russell C. Mumm
 Gary Munsterman and
 Marlene Finley
 Margaret O. Murray
 William and Velma Murray
 Nancy Muskin
 Mark and Letitia Naigles
 Daniel A. Najera
 Mr. and Mrs. David Naliboff
 Harold and Mary Nash

Craig S. Nelson, NOAA Ret
 and Cynthia Ann Nelson,
 USN Ret
 JoAnne Nelson
 Michael and Paula Nelson
 Richard and Gloria Newhouse
 Alice Nicolson
 Anton Nielsen and Wendy Keitel
 Elsie L. Nielsen
 Peter Niemiec and
 Ann Majchrzak
 Mr. and Mrs. Walter T. Nolte
 North Hampton, N.H.
 North Suffolk Garden Club
 Northeast Delta Dental
 Wilhelm and Patricia Northrop
 Daniel G. O'Connor
 Mr. and Mrs. Michael G. Odell
 Jacqueline and Kenneth Oldham
 Mr. and Mrs. John C. Oliver
 William and Jane Olsen
 Robert C. Osborne
 Nancy Oswald
 William G. Oswald
 Denise Otis
 Norma J. Ott
 Michael and Pat Otto
 Lloyd and LaVerne Paff
 Carl Page
 Virginia R. Pankow
 Mrs. Louis B. Pankratz
 Henry and Pauline Parker
 Jonathan and Vivian Parker
 Keith and Gail Parker
 Terry and Barnes Parker
 Roderic and Eve Parnell
 Lynn and Martha Pease
 Pam Pecor and Jamie Brooks
 Gaetane B. Pell
 Linda and Reed Pendleton
 Perennial Garden Club
 Perennial Planters Garden Club
 Katherine and James Perkins
 J. Henry Peters
 Lois and Joe Peterson
 Jeanmarie C. Petrell
 Arthur and Ada Phillips
 Alice A. Pinsley
 Piscataqua Garden Club
 Plainfield Garden Club

Lewis Popper
 Eleanor Preiss
 Graylin and Pamela Presbury
 Dietrich B. Presting
 Terese A. Preston
 Mary M. Priest
 PRIZIM, Inc.
 Mr. and Mrs. Terry L. Proffitt
 Providence Garden Club
 of Pennsylvania
 Craig T. Putnam
 George and Nancy Putnam
 Cheryl Pytlarz
 Cynthia L. Quarterman and
 Pantelis P. Michalopoulos
 W. K. Raezer
 Leo Rainer
 Ronald Rayner
 Mr. and Mrs. Charles W. Reace
 Kathleen Reed
 Melinda Reed
 Mr. and Mrs. Andrew Regan
 Philip Reseigh and Anna Mariani
 John and Barbara Reynolds
 Robert and Paula Rhea
 Patricia Rheaume
 William and Ines Rhoads
 Harry E. Rice, M.D.
 Robert Rice
 Roxanne A. Richards
 Charles C. Richardson, Jr.
 Ency S. Richardson
 H. Kyle Richardson
 Margaret E. Richardson
 Robert W. Riegel
 Rachel I. Riemann
 Brook Roberts
 Florence D. Roberts
 Wendy W. Roberts
 Grace Robinson
 V. Douglas and Marlene Robinson
 Elizabeth Roemer
 Leicester Rogers
 Catherine S. Ronck
 Robert and Ann Ronus
 Catherine M. Rose
 Herman H. Rose
 Suzanne Rose and Kenneth Stern
 Jack and Lynne Rosser
 Andre and Lee Roussel
 Stephanie Roussel

Timeline

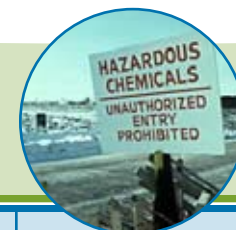
1957-2007

1974 SCA earns Interior Department Conservation Service Award: Marty Talbot, Liz C. Titus Putnam, and Under Secretary Nat Reed



1976 SCA relocates to Charlestown, NH

1977 SCA launches conservation programs for urban youth in Washington, DC



1978 Love Canal emergency declared

1981 SCA begins partnership with Bureau of Land Management

1979 Three Mile Island nuclear accident



1982 First Lady Nancy Reagan presents the President's Volunteer Action Award to SCA Founding President Elizabeth C. Titus Putnam

SCA

USA

30

1973 Endangered Species Act passed

1974 Chlorofluorocarbons identified as depleting ozone layer

31

SCA's Generous Donors

Steven Rovnyak
Mary C. Rower
George and Susan Rudnicki
Rodolphe Ruffy
Robert and Katharine Ruhl
Rumson Garden Club
Bernard M. Rupe
Eric E. Rush
Elisabeth W. Russell
Stuart W. Russell, Jr.
Timothy Ryder
Mr. and Mrs. Kenneth S. Samoil
Mr. and Mrs. Allen W. Sanborn
Sue B. Sander
Edgar W. Sands
John Sapovits
Jay and Meg Satz
Margaret E. Saunders
Liane Schaffer
Robert and Joan Scheel
Janet S. Scheevel
Thomas J. Schellenberg
Deborah and Proctor Schenk
Elizabeth S. Scher
Don and Toni Scherzer
Mrs. August Schilling
Claude and Melicent Schmidt
G. W. Schnur
Dr. and Mrs. Lawrence
Schonberger
Stanley H. Schroeder
Alison J. Schumacher
Booh Schut
Charles C. Scott, Jr.
Jonathan and Grace Scott
The Pamela Scott Fund of
The Philadelphia Foundation
Dorothy M. Scully
Mr. and Mrs. Edwin A. Seipp, Jr.
Maya S. Seraphin
J. Stephen Shaw
Mr. and Mrs. Eric Sheffels
Joseph and Francoise Shein
Lewis R. Shelley
Donald and Shirley Sher
Peter and Darlene Sherman
Robin L. Sherman
Linda P. Shields

General Raymond L. Shoemaker
Wilma L. Sickels
Andrea E. Simila
Simons Family Foundation
Gilbert C. Simpkins
Linda and Robert Singer
Mr. and Mrs. Sunil K. Sinha
Craig and Mary Skold
Dorothy Sloan
Mary Margaret Sloan
Mr. and Mrs. Alan R. Smith
Daphne W. Smith
Mr. and Mrs. Edgar A. Smith
Mr. and Mrs. Erville H. Smith
Gary L. Smith
Jeanne C. Smith
Mr. and Mrs. Kendric C. Smith
Martha and Phillip Smith
Michael W. Smith
Randall Smith and
Sharon Metcalf
Rowland M. Smith
Roy W. Smith, Jr.
Roy and Verna Smith
Constance and Parker Snapp
Max Snodderly and Kristen Harris
Brian Soenen
Margaret and Ben Solomon
South Side Garden Club of L.I.
Lewis Sovocool
Mr. and Mrs. Harold C. Sox, Jr.
Alexander and Maria Spence
Constance A. Spenger
Dr. and Mrs. Claus P. Speth
James G. Speth
Terry and Gay Spitz
The Stamford Garden Club
Rowena S. Stare
Marisa and Robert Steele
Peter Stein and Lisa Cashdan
Ralph and Katharine Stell
Richard and Margaret Stephens
Stuart and Elizabeth Stephens
Shaler and Carolyn Stidham Fund
of the Triangle Community
Foundation
James L. Stiglich
John E. Stillman
Gabrielle Stocker
Sybil W. Stoller

Stonington Garden Club
Jeffrey and Jane Stopford
Warren Stortroen
Mr. and Mrs. Blake Strayhorn
Mr. and Mrs. Edward S. Streeter
Robert J. Streich
Barbara Streit
Jill Strosser
Elizabeth and Harry Strouse
Roger Stube
Cristina Stummer
William and Linda Sturgeon
Cathie and Charles Sundry
Carl and Tove Sunshine
Mr. and Mrs. Brad Sutherland
David and Diane Suway
Bergen and Helene Suydam
Anne E. Sweeney
Bing Tai and Catherine Allen
Dalton Tarwater
Donald Taylor
Gail and Brian Taylor
Jean W. Tease
Matthew Terrible
Aija Thacher
Jo Ellen Thomas
Merilyn Thomas
Stephen A. Thompson
Barbara F. Tice
Robert L. Timmons
Stirling Tomkins, Jr.
Town and Country Garden Club
Bruce K. Tramm
Elizabeth C. Traugott
Stephen Trimble
Gail E. Trotter
Oak Brook Trout Unlimited
Penn's Woods Trout Unlimited
David K. Tu
Marjorie L. Tuttle
David Lemonick and Mary Tuttle
Joan Tweedy
Edward R. Uehling
Marian R. Urban
Karen and Anthony Usher
John P. Van Alstyne
Judith Van Riper
Mrs. Edgar L. Vaughn
Eberhard Veit
Margaret B. Vimmerstedt

Alderic and Alice Violette
Richard L. Voigt
Gary and Mary Jo Von Bieberstein
Jeffrey J. Von Haden
Vernetta F. Wallander
William and Beverly Walsh
Carol K. Walter
Ruth & Henry Walter Fund at the
Boston Foundation
Izaak Walton League of America
Beverly and John Wand
Warner Woman's Club
Jill Warner
Janet and Philip Warren
Nancy A. Watson
Susan Watson and Jerry Anderson
Mr. and Mrs. Daniel G. Watt
Mr. and Mrs. Brent D. Weaver
Janice Weinman
Robert and Marilyn
Weinstock-Collins
Dr. and Mrs. John S. Wells
Miriam O. Wells
Nancy P. Weston
Frederick and Annie
Weyerhaeuser
T. J. Whalen
Thomas H. Wheadon
Sarah Barnes Whelchel
Diane Whiffen
Charlotte G. White
Jeffrey White
Mary E. White
Carson Whitehead
Carolyn Widman
Mr. and Mrs. Richard H. Wilde
Dulcenia Wilder
George and Cynthia Willauer
Fred and Suzanne Williams
Annett N. Williamson
Frank and Harriet Williston
Mr. and Mrs. Patrick R. Wilmerding
Jeffrey R. Wilson
Penelope P. Wilson
Joyce P. Winston
Adolph Winter
Mary J. Wintle
Nancy M. Wirth
Thomas J. Wiswell
Ann Witter

Richard M. Wizansky and
Todd W. Mandell
Woman's National Farm &
Garden Assoc.-PA Division
Vera Wong and W. Earl Morren
Harold and Janet Wood
Mr. and Mrs. Kenneth Woodcock
Joan Woodward
Mr. and Mrs. George W. Woodzell
Richard C. Worden
Patricia G. World
Clark Wright, Jr.
Diane Wright
Tolford R. Young
John S. Zinsser, Jr.

Sean R. Barton
Gary and Autumnn Bea
Ronald and Jeanne Beatty
Michael D. Beaulieu
L. Carolyn Beck
Neal Becker
Shirley and Grant Beckfield
Linda and Richard Beidleman
Brett F. Beitzel
Elizabeth P. Belles
John J. Bellestri, Jr.
Kirstie L. Bellman
Ethel L. Bennett
Marjorie Benson
Patricia P. Benton
Donald and Janet Berg
Mary Ann Berliner
Katherine Besold
Stephanie Bill
Thomas J. Bird
Margaret and Stanley Birnbaum
Mr. and Mrs. Leonard F. Bischel
Elizabeth Bishop
William G. Bittler
Miss Ronnie Bogart
Albert Borlan
Daniel C. Bortko
John and Maralyn Bould
Sheila J. Bouwman
Robin R. Bown
Dennis M. Boyle
Roberta J. Bradbury
Philip and Helene Brandt
Mr. and Mrs. Warren W. Brandt
Peter A. Bray
Toni Brem
Ronald E. Brenner
John and Anne Brock
Donald L. Brockway
Bill and Deborah Brooks
Michele and Tony Brower
Deirdre Brown
Kristin M. Brown
Rogene A. Buchholz
Eliot and Marianne Buckingham
Elisha Buckner
John and Kathleen Buppert
Janet A. Burdick
E. Nancy Burns
Robert A. Burns

Jennifer Burr
Sharon Burr
Richard and Letitia Burwell
Helen B. Cahn
Barbara M. Calabro
Joyce Calhoun
Duncan J. Cameron
Edward A. Campbell
Edwin and Virginia Campbell
Sylvia S. Campbell
William N. Cannon, Jr.
Michael Caprio
Nancy T. Carbonara
Linda Carr
Margaret E. Carson
Robert S. Carson, M.D.
Bill and Linda Casnovsky
John and Hisako Cassidy
James and Carol Chapman
Jude Chauvette
Herbert and Betty Cheeseman
David and Claudia Chittenden
Carin Chow
Suzan and C.M. Clausen
Dorothy Clevenger
Mary Cocks
Derek and Barbara Cocovinis
Frances O. Coffield
Virginia M. Coggeshall
Anita Cohen
Robert and Loraine Coker
Elsa Cole
Meghan E. Cole
Stephen M. Corbin
Miss Joy Cordery
Alan Corless
Donald J. Cosmano
Laura Cottrell
Audrey P. Coty
Anne and Thomas Cowan
Joseph Craig
Dwight F. Crow
David P. Carrier
Donald and Phyllis Cyphers
Richard D. Davenport
Margaret Davidson
William E. Davis, Jr.
Vici DeHaan
Dianne DeLisle
Jane M. DeMayo

Roberta J. Demers
John and Catherine Demunter
Howard Denegar
Janet R. Dickson
Warren and Doris Dietrich
Henry and Nancy Dizney
Richard D. Doepker
Royal W. Domingo
Scott and Debra Dooley
Nettie Dopulos
Mrs. Sydney M. Dotson
Mr. and Mrs. David Dowley
Jon W. Dritelley
Gladys Dronberger
Darci and Jason Duelle
Irene E. Dunny
Francesca Eastman
Tim M. Eckert
Robert W. Eckland
Glenda J. Edenton
E. Dennis Ehrenberger
Monika M. Eisenbud
William D. Elfrink
Joseph A. Eliopoulos
Dorothy Emmons
Mr. and Mrs. Robert Engelman
David I. Erickson
Russell and Patricia Erickson
Brian J. Ericson
Betty F. Erion
Anne H. Evans
Janet V. Eyre
Linda Fadem
Nadine N. Fahlbusch
Thomas and Martha Fandel
Jeffrey S. Farbaniec
Robert J. Farrell
James Favor
Mimi Fearn
Betty and Joel Feinberg
Lisa J. Felix
Elizabeth S. Fernandez
Linda R. Ferrill
June M. Fleming
Gizella A. Flippin
Leon Follmer
Craig P. Folse
Anna Mae Forsberg
Sam Fowlkes

SCA's Generous Donors

Partners in Conservation

The following individuals participate in SCA's monthly and quarterly giving program.

Anonymous (6)
Joan E. Abess
Molly C. Adams
Drs. Wayne and Sonia Aller
Selma Altschul
Angelique Anderson
Clifford E. Anderson
Connie L. Anderson
Dolly Anderson
Ellen M. Anderson
Mr. and Mrs. William D.
Anderson, Jr.
Scott D. Andreae
Joe and Sol Anshien
Edythe L. Anthony
Robert and Joanne Antibus
Daniel E. Atkinson
Burton and Barbara Avery
Mark N. Ayvazian
Mr. and Mrs. Marlow S. Baar
Clyde Bailey
Virginia G. Ballantine
John S. Ballard
Jane Balsley
Forrest A. Barger
Herman Barros
Gregory W. Bartha

Timeline

1957-2007

SCA
USA

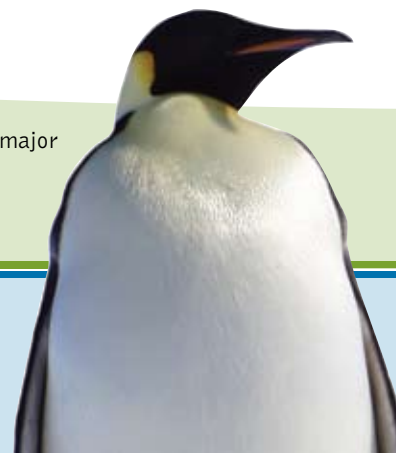
32



1983 Annual volunteers exceeds 1,000 for first time

1983 John Stockert becomes first SCA alumnus named National Park Superintendent, Moores Creek National Battlefield

1984 SCA manages major volunteer wilderness initiative with U.S. Forest Service



1985 Hole in the ozone over Antarctica first widely reported

1986 Worldwide whaling ban



1988 SCA begins international exchange program with Mexico



33

SCA's Generous Donors

Pamela Fox-Klauser and William Klauser
Chris Francis
Jacqueline A. Franco
William and Catherine Franks
Fred and Pam Freed
David and Ellen Freeman
Hermon Frith
Kevin Timothy Furey
Mr. and Mrs. Fred J. Gaggioli, Jr.
Sally Gall
Bill Gardner
Jeff Garmon
Daniel M. Garvey
Burkhard Gebauer
Marilyn George
Raymond Gettins
Rev. Donald W. Gibson
Timothy Glover
Kathleen and Peter Golden
Thomas M. Gray
Lumina Greenway
Edward Hakala
Miss Carlyn J. Halde
Alex and Leslie Hall
Nora P. Hall
Marshall Hamilton
Charles and Lois Hammer
Michael F. Hampton-Fitzgerald
David Haney
Michael S. Hanlon
Gail W. Hanna
Billie B. Hardy
Christopher and Sarah Harris
Laura J. Hart and Richard W. Grady
Katharine A. Hartig
Adele M. Hause
Dale and Sarah Hauser
Kathryn Hayes
Toi Hayes
John M. Headley
Mary Healy
Bill and Lisanne Hegman
Cleobell Heiple-Tice and Sidney Tice
Eric J. Hendrickson
Donald M. Herman

Mr. and Mrs. Leonard E. Hess
Steven R. Hibshman
Jean R. Hildenbrand
Arthur and Lois Hill
Joyce V. Hiller
Glenn and Ellen Himebaugh
Joanne Hinchliff
Christine Hirano
Mr. and Mrs. Christopher M. Holbrook
Wayne and Robin Holland
Margaret D. Holmes
Sharyon and Greg Holness
Heather and Rick Hornby
Mr. and Mrs. Lawrence A. Hughes
April Hull
Laurie A. Humphrey
Yorick Hurd
Virginia K. Huschke
Sybil J. Husted
Mark Ignaut
Mary and Earl Ingersoll
Jayson Ingram
Mark Jackson
Beryl B. Jacobs
Barbara J. Jacoby
Jennifer J. Jasicki
Mr. and Mrs. Michael Jenkins
Arnaldo Jimenez
Shelley John
Adam Johnson
Greg Johnson and Sandra LaBelle
Harold Johnson
Janine M. Johnson
Mary M. Johnson
Sue W. Johnson
Vicki K. Johnson
Mr. and Mrs. Barrett H. Jones, Jr.
Christopher and Deborah Jones
Malcolm M. Jones
Natasa Jonoska
Isabelle Kabrielian
Elaine and Ivan Kamil
Sumiko C. Kamiya
Thomas and Terri Kampe
Joseph N. Kane
Steve Kane
Mr. and Mrs. George Kaplan
Ivan and Joan Kaufman
Mrs. Marion Kaurup

William and Mary Keenan
Kathleen S. Kelly
Robert G. Kelly
George F. Kephart
Rita S. Kester and W. Daniel Horton
Daren T. Killam
Deborah H. Kioussis
Caroline Klund
Sandra Koenig
Bailey J. Korell
Henry and Martha Koukol
Maxine J. Krull
Martin J. Kux
Elisabeth Kwak-Hefferan
Richard P. Laabs
Milton H. Lackey, Jr.
Sheila C. Lally
Ralph T. Lampman
Frank and Carol Lanaghan
Walter and Linda Landgraf
James B. Landreth
Paul G. Lane
Priscilla Lane
Elizabeth Lansing
Robert and Helen Large
Linda L. Larish
Mr. and Mrs. R.L. Latterell
Barbara J. Lavell
Dana Lavoie
Michael Layman
Roy M. Lechtreck
Olive Leonard
Gregory W. Leston
Michel and Lynn Lettre
Elinor Levin
Christopher C. Light
Jan K. Lochner
Jennifer Loggie
Richard L. Lombard
Jennifer K. Long
Marjorie R. Long
Richard Loutzenheiser and Lorraine Edwards
Nancy S. Lovejoy
Diana Lowe-Hester
Thomas and Deborah Lund
Sheila Lundt
Jane W. Lusk
Beatrice MacDermott

Heidi E. Maclean
Cathleen Mahoney
Alta I. Mainer
James and Deborah Maluta
Robert E. Manning
Charlotte M. Manns
E. Christopher Maple
Jayne D. March
Emily Margrett
Susan E. Markley
Pedro Marques
Karen and Bob Martin
Peter E. Martin
Rose Martin
William J. Martin
Ernesto Martinez
Frederic J. Masback
Gail A. Massoll
Andrew T. Mathes
Lynda Matussek
John W. Mawson
Susan C. Maxwell
Stephen J. Mayer
Mary L. McCartney
Mary H. McCoy
Howard McDonald
Lucy B. McElroy and S.T. Czarniecki
Robert W. McGuire
Dana and Edith McHenry
John and Sarajane McInnes
Beverly C. McIntosh
Shirley M. McLean
Mike and Deanna McMillian
Ruth H. McMurry
Catherine A. Mehler
Brenda M. Melton
Melvin and Helen Mencher
Catherine Michaud
Howard W. Mielke, Ph.D.
Carol Milano
Charles and Janice Miller
Frances L. Miller
Helen S. Miller
Leland T. Miller
Mariah Miller
Edward L. Mockford
Eleanor B. Monaghan
Mr. and Mrs. Frederick W. Morris IV

Eva Moseley
Joan M. Moses
Virginia O. Moses
Laura J. Mosso
Michael and Cathy Muha
Margaret O. Murray
Daniel A. Najera
Mr. and Mrs. David Naliboff
Mary K. Nefedov
Robert and Antoineta Neff
Sue Nelson
Mr. and Mrs. A. C. Neumann
Lavonne R. Newman
Margaret D. Obendorf
John and Lani Ochs
Dr. and Mrs. Vahe Oshagan
Margaret G. Ott
Mr. and Mrs. William D. Paine
Constance Palmer
Lydia Pan
Camille Park and Robert Wilson
Kenneth E. Parr
John C. Parsons and Joan Parsons
James R. Pasley
Brint Passmore
Ocean L. Pellett
Charles E. Perkins
Fionna Perkins
Sharon S. Petersen
Jane and Bruce Peterson
Joy Peterson
Arthur and Ada Phillips
Diane H. Phillips
Irene Piccone
Kathleen and Warren Pinches
Donna and Bruce Powell
John L. Prather
Terese A. Preston
Mr. and Mrs. Loyal D. Pringle
Mr. and Mrs. Terry L. Proffitt
Catherine P. Purchis
Richard F. Quimby
Mr. and Mrs. Ronald A. Radice
Sanam E. Radjy
James and Deborah Rauseo
Sherry Reed Aguero
Janneke Resnick
Robert A. Resnik
Robert and Paula Rhea

Thomas Ribe and Monique Schoustra
Cecily R. Ricard
H. Kyle Richardson
Lillian R. Riddell
Joyce Robbins
Theodore B. Robbins
Janet Rollin
Mark T. Roman
Kerry and Janice Rosado
Sue R. Rose
Jerrold and Mary Ross
Suzanne C. Rudat
George and Susan Rudnicki
Joseph and Barbara Rumburg
Eric E. Rush
Jacqueline Russell and Jane Miller
Stuart W. Russell, Jr.
Timothy Ryder
Gary E. Sanborn
Stella B. Sargent
Barbara E. Sather
Nancy Sather
John and Heather Satrom
Aubra L. Sawyer
Carroll Schell
Claude and Melicent Schmidt
Konrad P. Schmidt
William G. Schmidt
Traci L. Schmitt
George H. Schnakenberg, Jr.
Jonathan and Deborah Schoer
Stanley H. Schroeder
Joan M. Schumaker
Perry Scott
James M. Seabrook, Jr.
Shirley C. Seagren
Daniel W. Sell
Helen G. Sellin
Laverne Sensiba
John and Frances Shaffer
Ada C. Shaum
Nancy L. Shaw
Vance C. Shaw
Patricia A. Sherman
Mr. and Mrs. Tim Sherry
General Raymond L. Shoemaker
Harriet H. Shoup
Barnett Shpritz

Andrea E. Simila
Helen S. Simmons
Steven L. Simmons
Heidi and Douglas Skiba
Craig and Mary Skold
Robert G. Slater
Dorothy Sloan
Gary L. Smith
Alfred Sommer
Bruce Spring
Louis N. Stamas, Jr.
Karin Stanley
Paul Stearns
Ned and Judith Steele
Cecilia Stephens
James and Susan Stewart
James S. Stewart
Terry P. Stout
L. D. Strader, Jr.
Barbara Streit
Elizabeth and Harry Strouse
Mr. and Mrs. David W. Swanson
Reuben and Viola Swanson
Jewell Sweeney
Dorothy Swenson
Michael J. Syzek
Beverly J. Tabor
Gail and Brian Taylor
Richard E. Taylor
R. F. Teichgraber
Glenn D. Teschendorf
Frankie A. Tester
Marilyn Thomas
Carol A. Thompson
Diane Thompson
Stephen A. Thompson
Hilary Thomson and Thomas Fredenburg
Alice Timothy
Jack and Betsy Train
Mary H. Trancho
Elizabeth C. Traugott
Mary Anna Trimble
Michael and Nika Turelli
Laraine D. Turk
William Turnbull
Edward R. Uehling
Leslie B. Underwood
Jessica Saxton and George Vacek
Hubert and Deborah Van Hecke

SCA's Generous Donors

Frank Van Hoegarden
Ruth Vander Sys
Jan B. Vinegar
Lawrence Volpe
Ruth Von Ahlefeldt
Ralph A. Voyta, Sr.
Martin Vukovich
Florence and Jackson Wagner
Isabelle Wald
Chrystal L. Walsh
David Warholak
Elizabeth S. Warner
J. Read Warner
Francis W. Warren, Jr.
Sarah D. Warren
Alice Weigel
Miriam O. Wells
Rolf Wertenuer
Diane Whiffen
Arden S. White
Glenn White
Marian and Alan Wicker
Dulcinea Wilder
Daniel L. Williams
Garth H. Wilson
Jeffrey R. Wilson
Scott Winemiller
Raymond J. Witt
Dallas Wivholm
James and Arlene Wood
Jonathan A. Woodman
Marcia W. Woolman
Patricia G. World
Barbara A. Wray
Laura Yardumian
Martha D. Young
Priscilla Zaworski
Scott J. Zehner
Robert and Marjorie Zimmerman
Robert Zolman

Timeline

1957-2007

1989 SCA creates the Greater Yellowstone Recovery Corps following massive wildfires



1990 SCA starts international exchange program with the Soviet Union

1990 SCA begins ongoing partnership with L.L.Bean

L.L.Bean

1993 SCA mounts Everglades recovery effort following Hurricane Andrew

1993 SCA receives National Wildlife Federation Conservation Achievement Award

1994 SCA begins on-going partnership with AmeriCorps



1994 Bald eagle upgraded from endangered to threatened list

1995 Wolves reintroduced to Yellowstone National Park



SCA

USA

34

1989 Bill McKibben's *The End of Nature*, warning of global warming

1989 Exxon Valdez

Foundations & Corporations

The following organizations provided contributions totaling \$250 or more to SCA between October 1, 2005 and January 10, 2007.

\$100,000+

The Annenberg Foundation - Los Angeles Office
 Claude Worthington Benedum Foundation
 ExxonMobil Foundation
 Ford Motor Company Fund
 The Home Depot Foundation
 Houston Endowment Inc.
 Johnson Controls, Inc.
 The Meadows Foundation
 National Park Foundation
 Unilever United States Foundation

\$50,000+

American Eagle Outfitters
 The Brown Foundation, Inc. of Houston
 Islands Fund
 Johnson & Johnson
 Mazda Foundation
 Meyer Memorial Trust
 National Forest Foundation

\$25,000+

Alcoa Foundation
 American Eagle Outfitters Foundation
 Anacostia Waterfront Corporation
 L.L. Bean
 The Morris and Gwendolyn Cafritz Foundation
 The Clowes Fund, Inc.
 Darden Restaurants Foundation
 Educational Foundation of America

Grable Foundation
 Mars Foundation
 Royal Caribbean International / Celebrity Cruises
 Vidda Foundation - Michael Brewer Fund

\$10,000+

Anonymous (2)
 Adobe Foundation Fund at the Community Foundation Silicon Valley
 All Is One
 The Bancroft Foundation
 The Batchelor Foundation
 S. D. Bechtel, Jr. Foundation
 The Herb Block Foundation
 Clark-Winchcole Foundation
 ConocoPhillips
 Edwin W. and Catherine M. Davis Foundation
 DC Watershed Protection Division, EHA
 Gaylord and Dorothy Donnelley Foundation
 Elizabeth Ordway Dunn Foundation
 Edwards Mother Earth Foundation
 Fannie Mae Foundation Fund of The Community Foundation for the National Capital Region
 Claire Giannini Fund
 The Lillian Goldman Charitable Trust
 Healy Family Foundation
 The Juniper Foundation
 Jacob and Charlotte Lehrman Foundation
 The Lightfoot Foundation
 The Looking Glass Institute
 Marisla Foundation
 Miranda Lux Foundation
 The Thomas Marshall Foundation
 Mellon Financial Corporation
 Motiva Enterprises LLC
 The Curtis and Edith Munson Foundation
 National Fish and Wildlife Foundation

Ovid D. Robinson Charitable Trust of PNC Advisors Charitable Trust
 PNC Community Development Banking
 Prince Charitable Trusts
 River Branch Foundation
 The Russell Family Foundation
 Robert M. Schiffman Foundation
 Elmina Sewall Foundation
 The Spring Creek Foundation
 Tapeats Fund
 Frederick & Margaret L. Weyerhaeuser Foundation
 The Wortham Foundation
 Wm. Wrigley Jr. Company Foundation
 Wyco Fund

Under \$10,000

Anonymous
 Autodesk
 Anna and Harry Borun Foundation
 Capital One
 Chevron Corporation
 The Cleveland Foundation
 The Clorox Company Foundation
 DC Children and Youth Investment Trust Corporation
 Dominion Foundation
 Dominion Virginia Power
 Duke Energy Foundation
 Eastern Analytical, Inc.
 Everett Philanthropic Fund
 Ferriday Fund Charitable Trust
 Fischer-Bauer-Knirps Foundation
 Freddie Mac
 The Fund for American Studies
 The Jacob and Terese Hershey Foundation
 Corina Higginson Trust
 Hiller Highlands Five Association
 David and Barbara B. Hirschhorn Foundation
 Roy A. Hunt Foundation
 The Mary Hillman Jennings Foundation
 The Katzenberger Foundation
 F. M. Kirby Foundation
 Laird Norton Family Fund
 LLH/LHM Foundation
 Laurance S. Rockefeller Fund
 George and Miriam Martin Foundation
 The D. Lynd and Terri K. McGowan Foundation
 Money Arenz Foundation
 Edward S. Moore Family Foundation
 New Hampshire Charitable Foundation - Upper Valley Region
 New York Mercantile Exchange Charitable Foundation
 Panhandle Energy
 Pearson Family Charitable Foundation
 The Peterson Charitable Lead Trust
 The Scrooby Foundation
 Serve DC
 Shaker Lakes Garden Club
 Sidney Fund
 Dylan Todd Simonds Foundation
 Snee-Reinhardt Charitable Foundation
 The John Ben Snow Memorial Trust
 Alexander C. & Tillie S. Speyer Foundation
 The Stettenheim Foundation
 Sustainable Pittsburgh
 The Timberland Company
 Vera J. Tucker Charitable Foundation
 Vanguard Charitable Endowment Program
 Walker Machinery Company
 The Washington Post
 WCA Waste Management
 Youth Foundation, Inc.
 Youth Service America

Legacy and Life Income Donors

SCA is grateful to the following individuals who have established a life-income gift and/or included the Association in their estate plans.

Anonymous (18)
 Alan and Helen Appleford
 Virginia R. Bacher
 Kenneth and Delma Baldrige
 Dutch and Hilary Barhydt
 Maeluise Barkin
 Edmund Bartlett
 Patricia Bartlett
 Estate of Rebecca L. Barton
 Barbara and Harry Beasley
 Thomas Beatini and Dina Scacchetti
 Floyd and Estelle Benner
 Jean M. Bennett
 Alice and Edwin J. Bernet
 William and Katherine Beyer
 Robert Bland
 Sarah L. Bohrer
 Shannon Brady
 Marianne S. Brecher
 Catherine D. Brown
 Marjori Brusasco
 Marsh and Peggy Bull
 Joyce Calhoun
 Margaret D. Carter
 Anne Childs and Charles Collins
 Heinke K. Clark
 Elva Bess Cook
 Ann and Dougal Crowe
 Barbara Putnam Daly
 Fred T. Darvill, Jr.
 Gordon F. Davies
 Margaret A. Del Mar
 Charles D. Dickey III
 Frances A. Dimond
 Frank J. Dixon
 Robert W. Eckland
 Muriel B. Emery
 Elizabeth and F. Garth Fletcher
 Robert C. Foster
 Beatrice and Thomas Frantz

James and Alice Frost
 Marie L. Gaillard
 Jane F. Garry
 Walter C. and Lorna Gates
 Mary B. Gayley and William V. Gnichtel
 Kathleen D. Gill
 Ann M. Gillard
 Emma Leigh Goodwin
 Christina Graybill
 Lyn and Ralph Haber
 Nancy Glenn Hansen
 Robert Hanson and Lyda Dicus
 Ellen and Ellis Harris
 L. Joyce Heinzelman
 Grace H. Henderson
 Milda Hester
 Wilfred and Sylvia Hill
 Joyce V. Hiller
 Noel and Patricia Holmgren
 Anna K. Holstrom
 Helen M. Hoover
 Becky and Matt Hope
 Elizabeth C. Hurd
 Marjean A. Ingalls
 Mildred L. Jaynes
 Marilyn Johnson
 G. Richard Keller and Marcia O. Keller
 Kathleen A. Kelley
 Mrs. R. B. Kemp
 Bruce D. Killips
 Grace M. Kirchner
 Helen L. Knopp
 Jane A. McLamarrah
 Ethel Konigin
 Ruth S. Kram
 Janice W. Krenmayr
 Ruth P. Kueser
 Nick J. Labeledz
 Carol Ann Lawson
 Kirk Lawton
 James and Mary Leatherberry
 Dorothea B. Ledman
 Kimberly A. Leizinger
 Lucille Lemmon
 Elizabeth P. Lent
 Larry and Donna Lesh
 Allison Rubinstein Levy
 Estate of Robert C. Likins
 G. Gilbert Lindemann

Phyllis Lindley
 James N. MacLeod
 June V. McCann
 John W. McClain
 Marjory A. McKinley
 Marilee McLean
 Mary M. McPherson
 Vincent and Natalie Merrill
 Peter C. Miles
 Margaret and Joseph Miller
 Jane E. Minesinger
 David S. Misun
 Robert and Helen Moody
 Helen M. Mount
 Virginia L. Mouw
 Judith B. Nadai
 Anita Norman
 Carmen B. Pappas
 Emma and Walter Pavelchek
 Jeffrey N. Pennell
 Sandra Perkins and Jeffrey Ochsner
 Daniel B. Perry
 Alexandra Pligavko
 Anne Powell Riley
 Agnes R. Priddy
 Elizabeth C. Titus Putnam
 Jonathan and Alice Richardson
 Mary C. Riley
 Jean B. Rogers
 John Mosby Russell
 Joan S. Samara
 Jay and Meg Satz
 Mr. and Mrs. Edward W Savery
 Dwaine Schuldt
 Edith Schwartz
 Lucretia L. Scott
 Bernice S. Seiden
 Sally and Dave Skimin
 McGregor and Jacqueline Smith
 Vera F. Smith
 Dorothy M. Somers
 Jed L. Staley
 Les H. Stanfield
 Louis W. Staudenmaier III
 Robert and Joan Stearns
 Myrne M. and Wilbur J. Steininger
 Merlyn W. Storm
 Martha Hayne Talbot
 Eugene and Ann Tennyson

Inga E. Thompson
 Phyllis J. Thompson
 Estate of Ann A. Titus
 Diane L. Trembly
 Stephen Trimble
 Henrietta G. Truitt
 Marjorie L. Tuttle
 Edward R. Uehling
 Helene P. Victor
 Elizabeth F. Wadsworth
 Janice Weinman
 Cheryl Wilfong and William McKim
 Betty B. Willey
 Richard M. Wizansky and Todd W. Mandell
 Estate of Elizabeth A. Wood
 Virginia B. Wood
 Elizabeth Woolley
 Betty and Roger Wrigley
 Catherine C. Yarnelle

Timeline

1957-2007

1996 SCA publishes *Lightly on the Land: The SCA Trail Building and Maintenance Manual*



2000 SCA launches wilderness restoration program in Big Cypress National Preserve

2002 SCA begins wildfire education outreach in western U.S.

2003 National Fire Plan Council presents SCA with Excellence in Community Assistance Award

2004 SCA initiates recovery effort in wake of southern California wildfires

2005 SCA earns U.S. Forest Service Centennial Award for conservation leadership



2006 SCA earns Interior Dept's Take Pride in America volunteerism award

1997 Kyoto Protocol introduced

2005 Hurricane Katrina

2006 Mount Rainier, Northwest suffer extensive flooding

2006 "An Inconvenient Truth"

SCA's Generous Donors

Named Funds

SCA maintains a number of endowed funds to support volunteers and priority programs and appreciates special funds established in memory of volunteers, staff and other friends of the Association.

The Blaustein Foundation, Inc.
Marvin Bodin Memorial Fund
Ann Fraser and George Brewer Memorial
Brenda M. Cercone Memorial Fund
Scott Croll Memorial Fund
The Elizabeth and E. Sanderson Cushman Memorial Fund
Robinson Cushman Memorial Fund
Jack Dolstad Fund
Betsy and Jesse Fink Fund for SCA Advancement
Henry S. Francis Wilderness Workskills Fund
Peter Marshall French Scholarship Fund
Leon and Lisa Gorman Endowment for Diversity in the Outdoors
Frederick John Kubeck Memorial Fund
Betsy Matsch Memorial Fund
Pamela Matthews Fund
Sarah Jane McCarron Fund
Karen Norton Memorial Fund
Grace Hendricks Phillips Scholarship Fund
Walter E. Rice Endowment Fund
Al Ryan Memorial Fund
Brian E. Scanland Memorial Fund
Gen Shirane Fund
David D. Wadsworth Memorial Fund
A. Scott Warthin Jr. Memorial Fund

Gifts in Kind

SCA appreciates in-kind gifts to help defray costs for items or services that would otherwise need to be purchased. Please contact Hugh Montgomery for more information about gifts of new goods and services.

Dorothy Acasta
Alco Parking Corporation
American Eagle Outfitters, Inc.
Autocell Electronics, Inc.
Ben and Jerry's Old Post Office
Bounds Construction, Inc.
Chipotle
Columbia Sportswear Company
Cosi
Curves for Women
Alex Cushman
Dairy Queen
East End Food Co-op
Einstein Brothers Bagels
Environmental Systems Research Institute
Fran's Family Restaurant
Ersky Freeman
Fuji Photo Film U.S.A., Inc.
Giant Eagle Inc.
Hair Divas
Hardman's Hardware
Monique Helstrom
The Home Depot, Inc.
Java Green
Makz Barber and Beauty Shop
Marmot Mountain, LLC
Merry Mary
Monadnock Paper Mills
Jenepher Moseley
Olive Garden
Nautilus - Nicholas Fitness Center
Nicholas Showplace
Patagonia, Washington, DC
Pig on the Pit BBQ
Bruce and Elizabeth Putnam
REI
Sambino's Pizza
Lewis R. Shelley
Starbucks

Subway Sandwiches and Salads
Summersville Convention & Visitors Bureau
Target Corporation
Vital Link
Wal-Mart Supercenter
Washington Area Bicyclist Association
Washington Nationals Baseball Team
West Virginia American Water
Whatsa Bagel
Whole Foods Market



Ahead

SCA

2007 SCA launches *Conservation in Action* Multi-Media Essay Contest

2007 SCA names 50,000th member

2007 SCA holds alumni reunions, service events at Grand Teton, Olympic, Yosemite, more

2007 SCA conducts "Green Tie" receptions in San Francisco, Seattle, Pittsburgh, Washington, DC

2008 SCA, NPS convene *EarthVision: Actions for a Healthy Planet* summit, Washington, DC, April '08

Financial Report

Two thousand six was another successful year for the Student Conservation Association, both from a mission perspective and financially.

From a mission perspective, SCA enrolled and fielded more than 3,100 young people in a wide range of conservation service and educational programs. This increase in the number of volunteers is coupled with many of them spending longer terms in the field thereby gaining an even more rewarding experience.

Financially, 2006 was our 19th consecutive year with an operating surplus. SCA's operating revenue increased over 6% from the previous year to \$24.2 million.

We have built new relationships with resource management agencies and expanded relationships with long time partners. SCA continues to adapt and evolve our intern "model" to meet the changing needs in the market, the changing needs of our members, and the continued fiscal challenges faced by everyone working in the conservation arena.


SCA remains tenacious in expense control and administrative cost management. More than 84% of 2006 expenses are committed to program activities. We focus our attention and investment on the young people that will be our "next generation of conservation leaders". As a result, for another year, SCA received an A- ranking from the standard-bearing American Institute of Philanthropy

for financial performance and fund raising efficiency and Charity Navigator's highest, four-star rating.

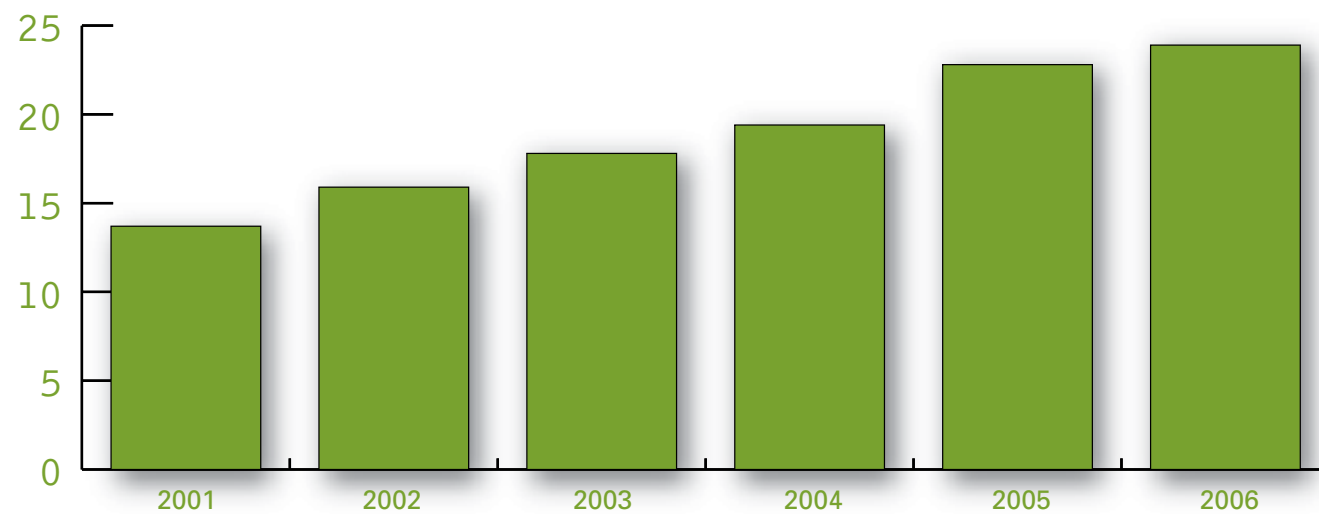
The Association's endowment strengthened in 2006, generating more than \$285,000 in income, and providing the ability to invest in a range of new programs. These opportunities further the core intern experience and bring additional opportunities to urban as well as high school aged youth. Ongoing philanthropic support of SCA's mission ensures that we can continue to improve the accessibility and expand the range of the SCA experiences.

To obtain a copy of the audited financial statements of the Student Conservation Association, Inc., please contact the Association.

Respectfully submitted,



Richard J. Seaman
Chief Financial Officer



SCA Total Support and Revenue 2001 - 2006

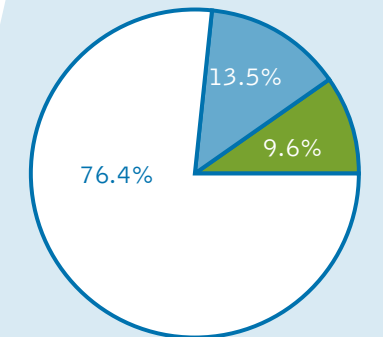
Financial Results 2004 - 2006

(in thousands)

	2004	2005	2006
SUPPORT AND REVENUE			
Program Income	14,614	17,565	18,236
Gifts and Grants	2,711	2,961	3,215
Individual Giving	1,942	2,164	2,600
Other Income	93	117	138
Total Unrestricted Operating Support and Revenue	\$19,360	\$22,807	\$24,189
Gifts Designated for Endowment (Note 1)	155	413	283
Temporarily Restricted Grants	4	-77	-300
Restricted Gifts	146	319	-11
Total Support and Revenue	\$19,665	\$23,462	\$24,162
OPERATING EXPENSES			
Program Expenses:			
Field Expenses	12,345	14,263	14,815
Program Support and Development	3,472	3,986	4,327
Participant Recruitment	838	890	1,011
Total Program Expenses	\$16,655	\$19,139	\$20,153
General and Administrative	1,509	2,239	2,240
Fund Raising Expenses:			
For Operations	1,051	1,260	1,501
For Endowment	132	134	172
Total Fund Raising Expenses	1,183	1,394	1,672
Total Operating Expenses	\$19,347	\$22,771	\$24,065
INCREASE/(DECREASE) IN NET ASSETS			
Unrestricted Funds:			
From Operations	145	170	296
Board Designated (Note 1)	23	279	112
Total Unrestricted Funds	168	449	407
Temporarily Restricted Funds	4	-77	-300
Restricted Funds	146	319	-11
Total Increase/(Decrease)	\$318	\$691	\$96
BALANCE SHEET			
Total Assets	18,173	20,740	19,953
Total Liabilities	7,414	9,290	8,407
Net Assets	\$10,759	\$11,450	\$11,547
ENDOWMENT VALUE AT SEPTEMBER 30			
Board Designated Funds (Note 1)	3,131	3,411	3,522
Donor Restricted Funds	3,368	3,686	3,676
Total Endowment Value	\$6,499	\$7,097	\$7,198

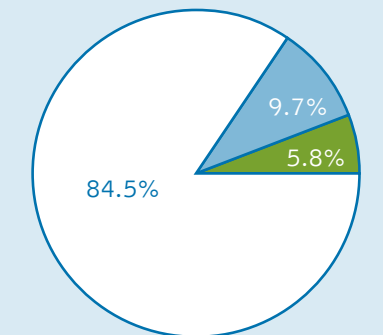
Note 1: SCA's Board of Directors has designated all unrestricted bequest and capital campaign gifts to the endowment fund. Presented net of investment gains/losses at September 30.

2006 Support & Revenue



- Program Income 76.4%
- Foundation & Corporate Grants 13.5%
- Gifts from Individuals 9.6%

2006 Expenses



- Program Expenses 84.5%
- General & Administrative 9.7%
- Fundraising 5.8%

SCA Officers

Fred Prescott
Chairman of the Board

Peter Hafner Jost
Secretary

Reginald C. Shiverick*
Treasurer

Dale M. Penny
President & CEO

Mark Bodin
Chief Operating Officer & Executive Vice President

Valerie J. Bailey
Executive Vice President & Assistant Secretary

Richard Seaman
Chief Financial Officer & Assistant Treasurer

Scott C. Weaver*
Senior Vice President for Government Relations & Partnership Development

SCA Board of Directors

Robert Aldag
Paradise Valley, AZ

Stephen M. Bartram*
Executive Director, Lake Forest Open Lands Association
Lake Forest, IL

Melanie Beller
Kellogg Co.
Washington, DC

Paula K. Cleary
Westport, CT

William C. Coleman
CEO, CLF Ventures
Boston, MA

Tom Collier
Partner, Steptoe & Johnson LLP
Washington, DC

Clydia J. Cuykendall
Of Counsel, Cushman Law Offices
Olympia, WA

Dayton R. Duncan
Florentine Films
Walpole, NH

Patricia “Pipa” Elias*
Graduate Student, Department of Forestry, Virginia Tech
Blacksburg, VA

Dean Fischer
President, West Monroe Partners
Chicago, IL

David D. Fitch
President & CEO, Gables Residential
Atlanta, GA

Fraser Brewer Gilbane
Rumford, RI

Jane O. Goedecke
Goedecke & Co., LLC
Boston, MA

Charles “Reb” Gregg
Gregg Law
Houston, TX

Peter S. Hayes
President, Hyla Woods
Portland, OR

Miranda Henning*
Senior Manager, ENVIRON International Corporation
Portland, ME

Alan Jones
Managing Partner, A. R. Jones & Associates, LLC
Novato, CA

James Maddy
CEO, Association of Zoos & Aquariums
Silver Spring, MD

Patricia Merritt
Vice President, UBS Financial Services, Inc.
New York, NY

Joan B. Murphy
Phoenix, AZ

Fred Prescott
Vice President, LL Bean
Freeport, ME

Gene Reineke
Chief Operating Officer, Hill & Knowlton USA
Chicago, IL

Dick Resch
President and CEO, KI
Green Bay, WI

John J. Reynolds
Executive Vice President, Centennial Planning, National Park Foundation
Washington, DC

Jane Rogers
Mill Valley, CA

Reginald C. Shiverick*
President, Dakota Software
Cleveland, OH

Robert G. Stanton
Retired Director, National Park Service
Fairfax Station, VA

Joshua C. Stearns*
Instructor, University of Massachusetts
Amherst, MA

Ellen Spencer Susman
The Spencer Connection, Inc.
Houston, TX

Christina P. Wong*
University of California Berkeley
San Francisco, CA

Peter Hafner Jost
General Counsel
Dickstein Shapiro Morin & Oshinsky LLP, Washington, DC

SCA Honorary Directors

Elizabeth C. Titus Putnam*
Founding President

John R. Twiss, Jr.
Chairman Emeritus

The Hon. Russell E. Dickenson

Martha Hayne Talbot

SCA National Council

Edmund Bartlett*
Chevy Chase, MD

Jack Chin*
Senior Analyst, Vice President
Blueprint Research & Design, Inc.
San Francisco, CA

Charles H. Collins
Managing Director, The Forestland Group
Boston, MA

Kathryn Fuller
Chair of the Board, Ford Foundation
Washington, DC

Scott D. Izzo
Director, Richard King Mellon Foundation
Ligonier, PA

Judith B. Nadai
San Francisco, CA

Patrick F. Noonan
Chairman Emeritus,
The Conservation Fund
Arlington, VA

John C. Oliver
Pittsburgh, PA

C.W. Eliot Paine
Kirkland Hills, OH

Wendy J. Paulson
New York, NY

Bruce M. Putnam
Shaftsbury, VT

Allison Whipple Rockefeller*
New York, NY

Theodore Roosevelt IV
Managing Director, Lehman Brothers
New York, NY

James Gustave Speth
Dean, Yale School of Forestry & Environmental Studies
New Haven, CT

Rand Wentworth
President, Land Trust Alliance
Washington, DC

SCA 50th Anniversary Honorary Committee

Allison Whipple Rockefeller*
Co-chair, New York, NY

Theodore Roosevelt IV
Co-chair, Managing Director,
Lehman Brothers
New York, NY

Ken Burns
Filmmaker
Walpole, NH

Dr. Sylvia A. Earle
National Geographic Society
Washington, DC

Dianne Feinstein
U.S. Senator, California

Daniel Fogel
President, University of Vermont
Burlington, VT

Kathryn Fuller
Chair of the Board, Ford Foundation
Washington, DC

Charles A. Harvey
VP of Diversity and Public Affairs,
Johnson Controls
Milwaukee, WI

Catherine Hill
President, Vassar College
Poughkeepsie, NY

Patrick Leahy
U.S. Senator, Vermont

Cornelius B. Murphy, Jr
President, SUNY-College of Environmental Science & Forestry
Syracuse, NY

James O'Donnell
CEO, American Eagle Outfitters
Pittsburgh, PA

James Gustave Speth
Dean, Yale School of Forestry & Environmental Studies
New Haven, CT

Robert G. Stanton
Retired Director, National Park Service
Fairfax Station, VA

Elizabeth Cushman Titus Putnam*
SCA Founding President
Shaftsbury, VT

Martha Hayne Talbot
McLean, VA

Bill White
Mayor, Houston, TX

Committee as of February 1, 2007

SCA Management Team

Dale M. Penny
President & CEO

Valerie J. Bailey
Executive Vice President for Strategic Planning & Development

Mark Bodin
Chief Operating Officer & Executive Vice President

Richard J. Seaman
Chief Financial Officer

Robert B. Coates
Senior Vice President for Program

Reginald “Flip” Hagood
Senior Vice President for Strategic Initiatives & Business Development

Scott C. Weaver*
Senior Vice President for Government Relations & Partnership Development

Kevin Hamilton
Vice President for Public Relations & Communications

Kimberly L. Henning
Vice President for Human Resources

Robert D. Holley
Vice President for Advancement

Jay A. Satz*
Vice President for Western Initiatives

* denotes SCA alumnus/alumna



Do Something Grand

Leave a Legacy for Our Land

Protect the grandeur of our treasured lands for years to come with a legacy gift to SCA. You can remember SCA in your will or living trust. Or you can name SCA a beneficiary of an IRA, 401(k) or life insurance policy. You can also establish a tax-saving life income arrangement with SCA.

For information on smart estate planning strategies under the new tax law and the proper legal designation for SCA, please contact Hugh Montgomery toll-free at 1-888-722-9675, ext. 151 or hmontgomery@theSCA.org.



SCA is a proud partner of AmeriCorps and the Corporation for National and Community Service Network.



CFC#0941

SCA is proud to be a member of Earth Share, a federation of nonprofit conservation and environmental organizations. Through the Combined Federal Campaign, and state and corporate workplace giving campaigns, Earth Share provides opportunities for individuals to contribute funds to support SCA's programs and activities. Our thanks to the many donors who contribute to SCA through workplace giving. For more information please contact Pam Pecor at 603.543.1700 ext. 152 or via e-mail at ppecor@theSCA.org.



SCA has been granted an A- rating by the American Institute of Philanthropy. SCA also holds a Four Star (highest) ranking from Charity Navigator, a leading independent charity evaluator.



SCA is a nonprofit, charitable organization as qualified under Section 501(c)(3) of the Internal Revenue Code. Contributions are tax-deductible to the extent permitted by law. SCA is an equal opportunity/affirmative action employer committed to workforce diversity.

Photo Credits: Page 6, Carlos Antonio Rios, Houston Chronicle; Page 9, Marty Talbot; Page 11, Carlsbad Caverns National Park; Page 12, Jack Chin; Page 18, Anne Brewer Cox; Page 21, Nina Roberts; Page 39, Kevin Cullen. All other photos provided by SCA.



National Office

The SCA Center for Conservation Service

689 River Road
PO Box 550
Charlestown, NH 03603-0550
P 603.543.1700
F 603.543.1828

Regional Offices

SCA Boise

1491 Tyrell Lane
Boise, ID 83706
P 208.424.6734
F 208.424.6944

SCA California/Southwest

655 13th Street
Suite 100
Oakland, CA 94612
P 510.832.1966
F 510.832.4726

SCA Mid-Atlantic/Southeast

1800 North Kent Street
Suite 102
Arlington, VA 22209
P 703.524.2441
F 703.524.2451

SCA Houston

5555 Morningside Drive
Suite 212
Houston, TX 77005
P 713.520.1835
F 713.520.1562

SCA Northwest

1265 South Main Street
Suite 210
Seattle, WA 98144
P 206.324.4649
F 206.324.4998

SCA Three Rivers

Investment Building
239 4th Avenue
Suite 1007
Pittsburgh, PA 15222
P 412.325.1851
F 412.325.1856



100% Post-Consumer
Recycled Material

©2007
Student Conservation
Association, Inc.